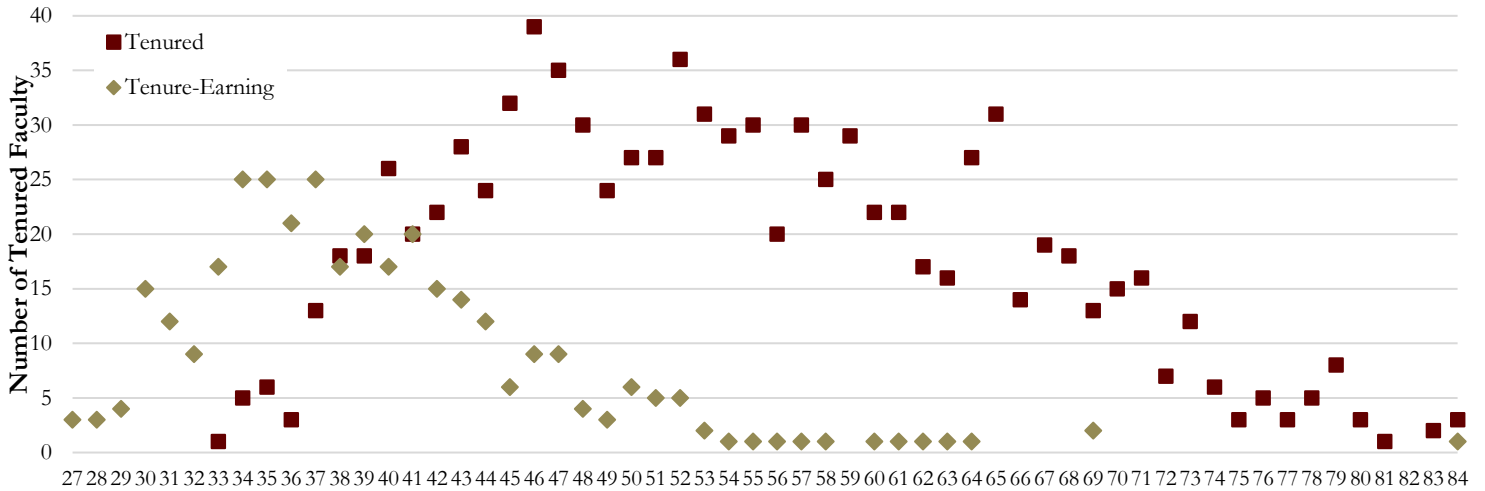


# Tenured Faculty by Age, 2023-24



<b>Tenured Faculty</b>	<b>25-30</b>	<b>31-35</b>	<b>36-40</b>	<b>41-45</b>	<b>46-50</b>	<b>51-55</b>	<b>56-60</b>	<b>61-65</b>	<b>66-70</b>	<b>71-75</b>	<b>76+</b>	<b>Total</b>
Arts and Sciences	0	3	27	45	64	63	45	50	34	11	18	360
Business	0	2	8	9	8	13	8	3	5	4	2	62
Communication & Information	0	1	3	5	5	9	7	1	6	3	0	40
Criminology & Criminal Justice	0	1	7	1	1	3	1	0	0	0	1	15
Education, Health, & Human Sci.	0	2	9	13	12	12	6	6	6	3	0	69
Engineering	0	0	2	11	8	5	9	8	4	3	0	50
Entrepreneurship (Moran)	0	1	2	0	0	0	1	0	1	1	0	6
Fine Arts	0	0	2	5	12	7	10	9	3	6	2	56
Hospitality (Dedman)	0	0	3	0	0	1	1	1	1	0	0	7
Law	0	0	1	5	4	2	2	4	2	2	1	23
Medicine	0	0	0	4	7	7	8	5	6	2	0	39
Motion Picture Arts	0	0	0	0	1	1	1	0	0	0	0	3
Music	0	0	1	6	6	13	13	9	4	3	2	57
Nursing	0	0	2	2	4	3	2	1	1	0	1	16
Social Sciences & Public Policy	0	2	10	14	15	10	9	4	3	3	1	71
Social Work	0	0	0	2	4	1	0	1	2	1	1	12
Other Departments and Offices*	<u>0</u>	<u>0</u>	<u>1</u>	<u>4</u>	<u>4</u>	<u>3</u>	<u>3</u>	<u>11</u>	<u>1</u>	<u>2</u>	<u>3</u>	<u>32</u>
<b>Total</b>	<b>0</b>	<b>12</b>	<b>78</b>	<b>126</b>	<b>155</b>	<b>153</b>	<b>126</b>	<b>113</b>	<b>79</b>	<b>44</b>	<b>32</b>	<b>918</b>

<b>Tenure Earning Faculty</b>	<b>25-30</b>	<b>31-35</b>	<b>36-40</b>	<b>41-45</b>	<b>46-50</b>	<b>51-55</b>	<b>56-60</b>	<b>61-65</b>	<b>66-70</b>	<b>71-75</b>	<b>76+</b>	<b>Total</b>
Arts and Sciences	9	37	26	24	4	2	0	0	0	0	0	102
Business	3	3	4	1	1	0	0	0	0	0	0	12
Communication & Information	0	1	8	3	4	1	0	0	0	0	0	17
Criminology & Criminal Justice	2	3	3	0	0	0	0	0	0	0	0	8
Education, Health & Human Sci.	2	13	9	6	3	2	0	0	0	0	0	35
Engineering	3	4	11	4	1	0	0	0	0	0	0	23
Entrepreneurship (Moran)	0	0	0	0	1	0	0	0	0	0	0	1
Fine Arts	1	2	6	12	7	3	2	1	1	0	0	35
Hospitality (Dedman)	0	1	1	1	0	0	0	0	0	0	0	3
Law	0	2	3	2	0	0	0	0	0	0	0	7
Medicine	0	1	7	0	3	2	2	0	0	0	0	15
Motion Picture Arts	0	0	0	0	0	0	0	0	0	0	0	0
Music	1	5	4	8	5	3	0	2	0	0	1	29
Nursing	0	2	4	2	0	0	0	0	1	0	0	9
Social Sciences & Public Policy	5	11	12	4	1	0	0	0	0	0	0	33
Social Work	0	3	2	0	0	1	0	0	0	0	0	6
Other Departments and Offices*	<u>0</u>	<u>0</u>	<u>0</u>	<u>0</u>	<u>1</u>	<u>0</u>	<u>0</u>	<u>1</u>	<u>0</u>	<u>0</u>	<u>0</u>	<u>2</u>
<b>Total</b>	<b>26</b>	<b>88</b>	<b>100</b>	<b>67</b>	<b>31</b>	<b>14</b>	<b>4</b>	<b>4</b>	<b>2</b>	<b>0</b>	<b>1</b>	<b>337</b>

\* Other departments and offices include: Office of Distance Learning, The Graduate School, ISPA, LSI, National High Magnetic Field Lab., Office of the President, Office of the Provost, Office of Research, PC Campus, Center for Civic Education & Service, and Undergraduate Studies.

Source: Office of Institutional Research (Employee File)