

Industrial & Manufacturing Engineering Data Booklet

Fall Term 2011
Quality Enhancement
Review

Prepared by the Office of Institutional Research



**Industrial & Manufacturing Engineering
FALL TERM 2011**

Most recent available statistics

		Report Page No(s)
Degrees Offered	5	1
Faculty	11	2
Majors (Fall 2010 Headcount)		
Undergraduate	68	3-6
Graduate - Masters	11	3-6
Graduate - Specialist	-	3-6
Graduate - Doctorate	20	3-6
Total	99	3-6
2010-2011 Degrees Awarded		
Bachelors	25	7
Masters	10	7
Specialist	-	7
Doctorate	2	7
Total	37	7
Average Class Size (Fall 2010)		
Undergraduate		
Lower - classroom	28.0	8
Upper - classroom	23.6	8
Graduate - classroom	4.1	8
Credit Hours - Annual (2010-2011)		
Fundable	2,295	9
Non-fundable	73	10
Total	2,368	11
University (fundable)	1,074,302	SIF*
2010-2011 Department Fundable Hours As Percent of University Fundable Hours	0.2%	calculated
Student FTE's- Annual (state fundable 2010-2011)		
Lower	5.5	9
Upper	38.2	9
Grad I	6.3	9
Grad II	10.9	9
Total	60.9	9
Credit Hours Percentages by Instructor Type (Fall 2010)		12
Faculty	55.2%	calculated
OPS Regular Faculty	0.0%	calculated
OPS Faculty Adjuncts	25.9%	calculated
Graduate Assistants	0.0%	calculated
A&P/USPS	3.5%	calculated
Phased Retirement	0.0%	calculated
Others	15.4%	calculated
Average Total Credit Hours Taught per Faculty FTE (All Hours, 2009-2010)		
Fall Term	73.9	12
Spring Term	70.7	12
Academic Year	144.6	calculated
Annual Student FTE's Taught by all Faculty (Fall & Spring total hrs converted to annual FTE's, 2009-2010)		16
Undergraduate (academic year hours/40)	38.0	calculated
Graduate (academic year hours/32)	19.1	calculated
Total	57.1	calculated

*Note: most statistics are based on the Industrial & Manufacturing Engineering account 217xxx. Related accounts may not be included in expenditures and in faculty courses and hours taught. *SIF=Student Information File*

Industrial & Manufacturing Engineering

Fall Term 2011

Table of Contents

	<u>Page</u>
Degree Programs	1
The Faculty.....	2
Enrollment by major	3
Degrees Awarded.....	7
Average Class Size	8
Credit Hours by Semester/Fall & Spring/Annual	
Fundable	9
Non-fundable.....	10
Total	11
Credit Hours and Courses by Instructor Type.....	
E&G Detail 2005-06 to 2009-10	12
Faculty Courses and Hours 2005-06 and 2009-10	
(Individual Faculty Summary)	
2005-06	13
2009-10	15
E&G Budgeted Faculty and Staff Lines.....	17
E&G Expenditures by Summary Object Code	18
Graduate Student Completion	19
Unit Accomplishment Summary Pages 1 and 2.....	20

**COLLEGE OF ENGINEERING
INDUSTRIAL AND MANUFACTURING ENGINEERING
DEGREE PROGRAMS**

Major Name	Major Code	CIP Code	Degree Offered
Industrial Engineering	557010	143501	Bachelors
Industrial Engineering	557010	143501	Masters
Industrial Engineering	557010	143501	Doctorate

Major Name	Major Code	CIP Code	Degree Offered
Engineering Management	557011	143501	Masters

Major Name	Major Code	CIP Code	Degree Offered
Global Manufacturing	557012	143501	Masters

Source: Degree Program Inventory, FSU and SUS

**COLLEGE OF ENGINEERING
INDUSTRIAL AND MANUFACTURING ENGINEERING
FACULTY DEMOGRAPHICS**

Florida State University

				Admin.							
Last Name	First Name	Degree	Degree University	Code	Class & Title	Mo.	Tenure	FSU Hire	Gender	Race	Citizenship
Liang	Zhiyong	Ph.D.	Beijing Univ. of Aero & Astro	99	9001 - Professor	9	1	2001-04-02	Male	Asian	U.S. Citizen
Liu	Tao	Ph.D.	Georgia Institute Of Technology	99	9003 - Assistant Professor	9	2	2007-08-09	Male	Asian	Resident Alien
Okoli	Okenwa	Ph.D.	University of Warwick	G1	9002 - Associate Professor	9	1	1998-03-17	Male	Black	U.S. Citizen
Vanli	Omer	Ph.D.	Pennsylvania State University	99	9003 - Assistant Professor	9	2	2008-08-08	Male	Other	Resident Alien
Wang	Hsu-Pin	Ph.D.	Pennsylvania State University	O3	9001 - Professor	9	1	2000-05-08	Male	Asian	U.S. Citizen
Zeng	Changchun	Ph.D.	Ohio State University	99	9003 - Assistant Professor	9	2	2007-08-09	Male	Asian	Resident Alien
Zhang	Chun	Ph.D.	University Of Iowa	C1	9001 - Professor	9	1	1993-08-09	Male	Asian	U.S. Citizen
Zhang	Mei	Ph.D.	Osaka Prefecture University	99	9002 - Associate Professor	9	2	2007-08-09	Female	Asian	U.S. Citizen
Chatterjee	Jhunu	Ph.D.	India Assoc. for the Cultivation of S	99	9162 - Assistant Scholar/Scientist/Engineer	12	3	2010-09-17	Female	Asian	U.S. Citizen

Florida A&M University

				Admin.							
Last Name	First Name	Degree	Degree University	Code	Class & Title	Mo.	Tenure	Hire	Gender	Race	Citizenship
Awoniyi	Samuel A.	Ph.D.	Cornell University	99	9001 - Professor			1986-12-23	Male	Black	Resident Alien
Cutwright	Ronald	M.S.	Florida A&M University	99	9004 - Instructor			2010-01-04	Male	Black	U.S. Citizen

Administrative Codes:

C1 - Chair
O3 - Assistant VP, Research
G1 - Graduate Coordinator
99 - No Administrative Duties

Tenure Codes:

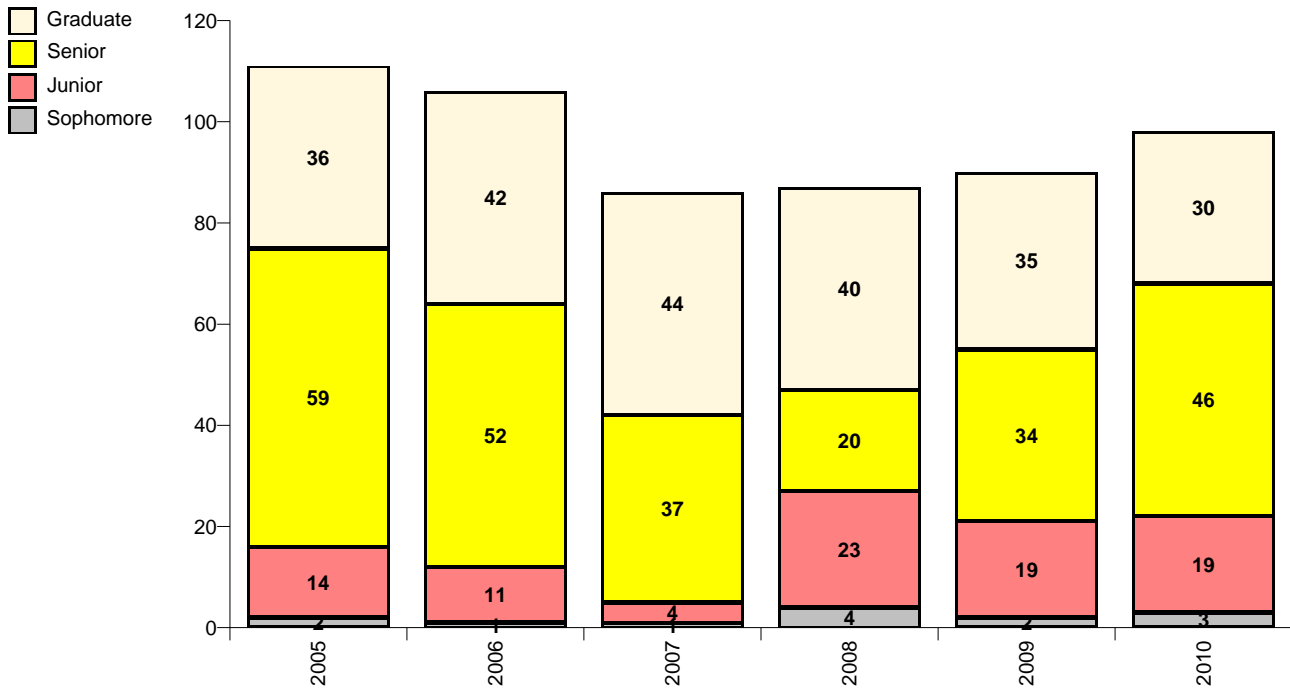
1 - Tenured
2 - Tenure-Earning
3 - Non-Tenured

Last Updated on June 14, 2011

**COLLEGE OF ENGINEERING
INDUSTRIAL AND MANUFACTURING ENGINEERING
HEADCOUNT ENROLLMENT BY FALL SEMESTER**

Industrial Engineering

557010



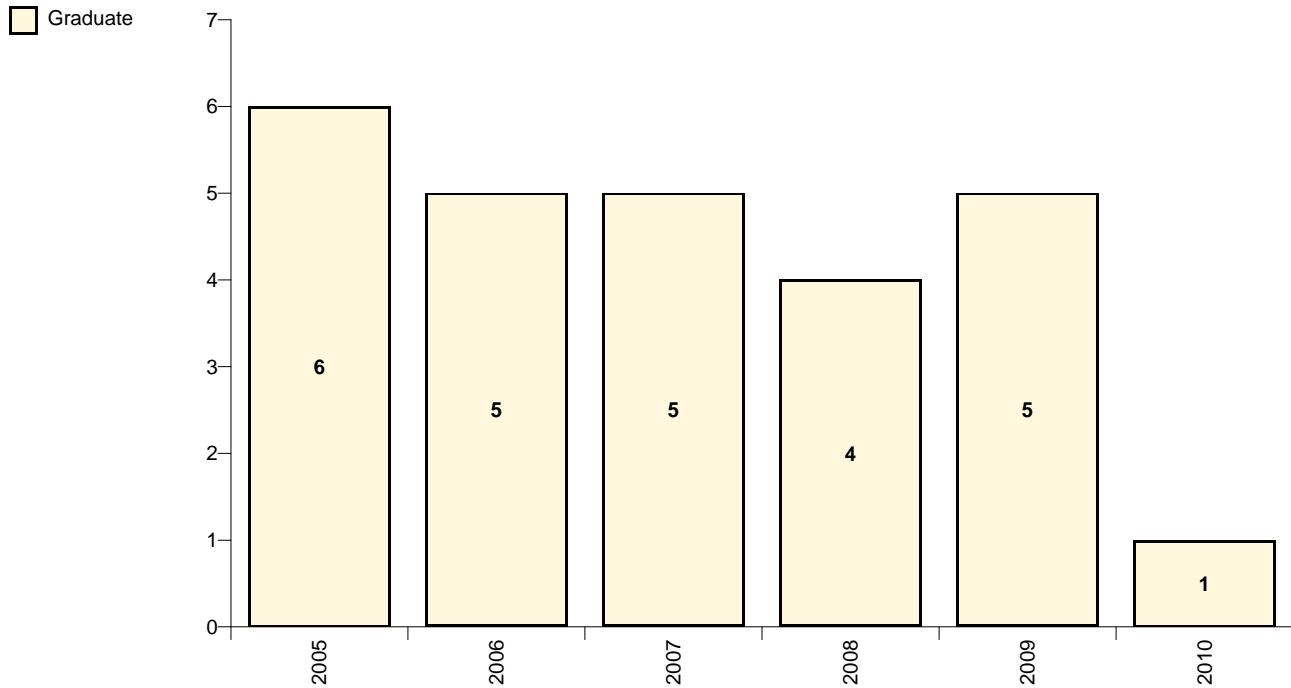
	2005	2006	2007	2008	2009	2010
Sophomore	2	1	1	4	2	3
Junior	14	11	4	23	19	19
Senior	59	52	37	20	34	46
Graduate - Masters	18	17	18	18	15	10
Graduate - Doctorate	18	25	26	22	20	20
Total	111	106	86	87	90	98

Source: Fall Preliminary Student Data Course Files

**COLLEGE OF ENGINEERING
INDUSTRIAL AND MANUFACTURING ENGINEERING
HEADCOUNT ENROLLMENT BY FALL SEMESTER**

Engineering Management

557011



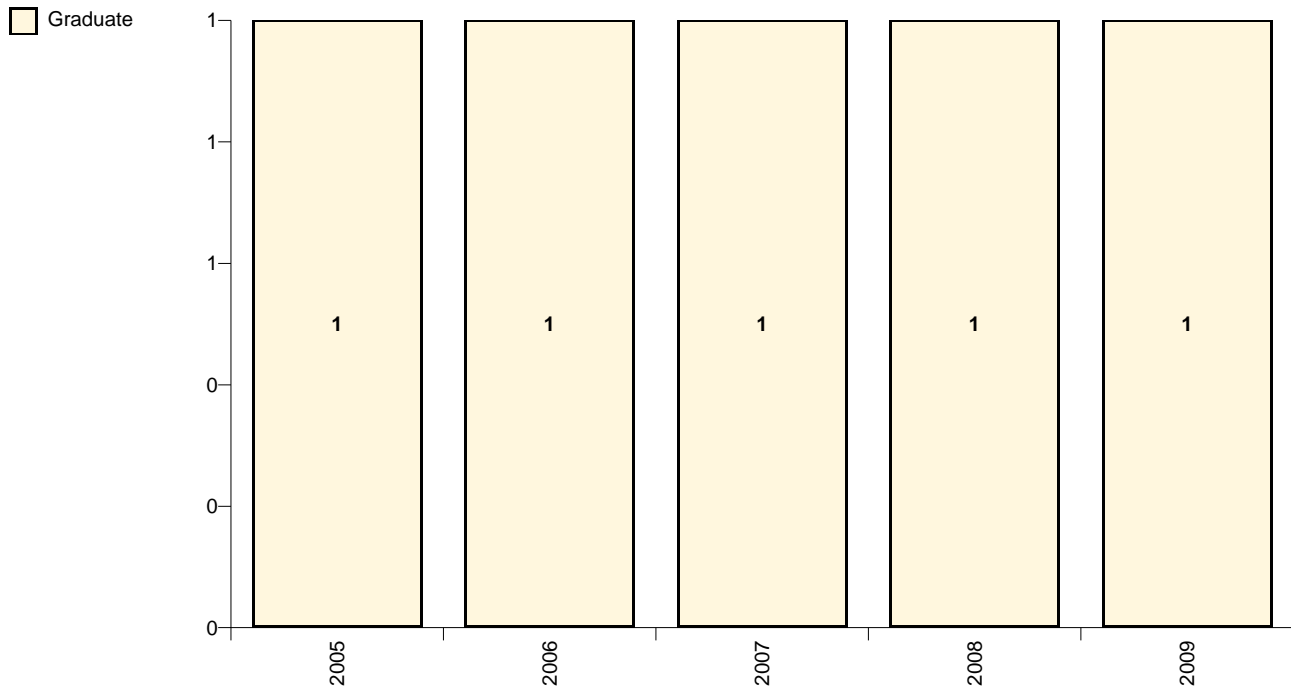
	2005	2006	2007	2008	2009	2010
Graduate - Masters	6	5	5	4	5	1
Total	6	5	5	4	5	1

Source: Fall Preliminary Student Data Course Files

**COLLEGE OF ENGINEERING
INDUSTRIAL AND MANUFACTURING ENGINEERING
HEADCOUNT ENROLLMENT BY FALL SEMESTER**

Global Manufacturing

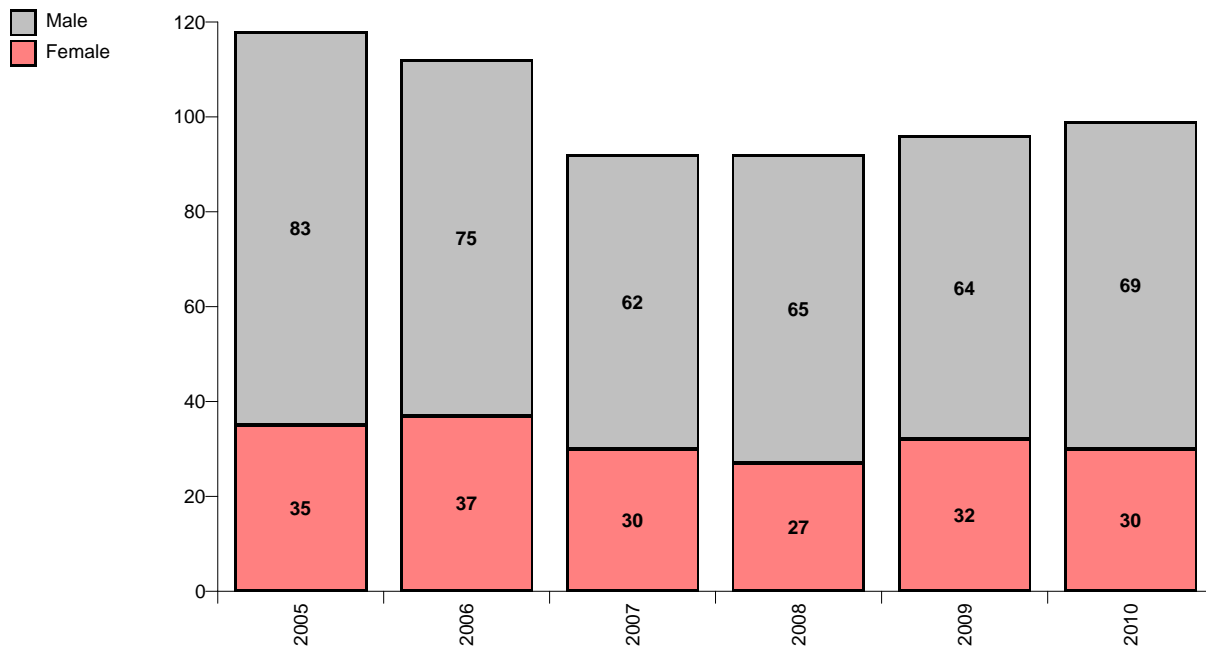
557012



	2005	2006	2007	2008	2009
Graduate - Masters	1	1	1	1	1
Total	1	1	1	1	1

Source: Fall Preliminary Student Data Course Files

College of Engineering
Industrial and Manufacturing Engineering
Enrollment by Fall Semester

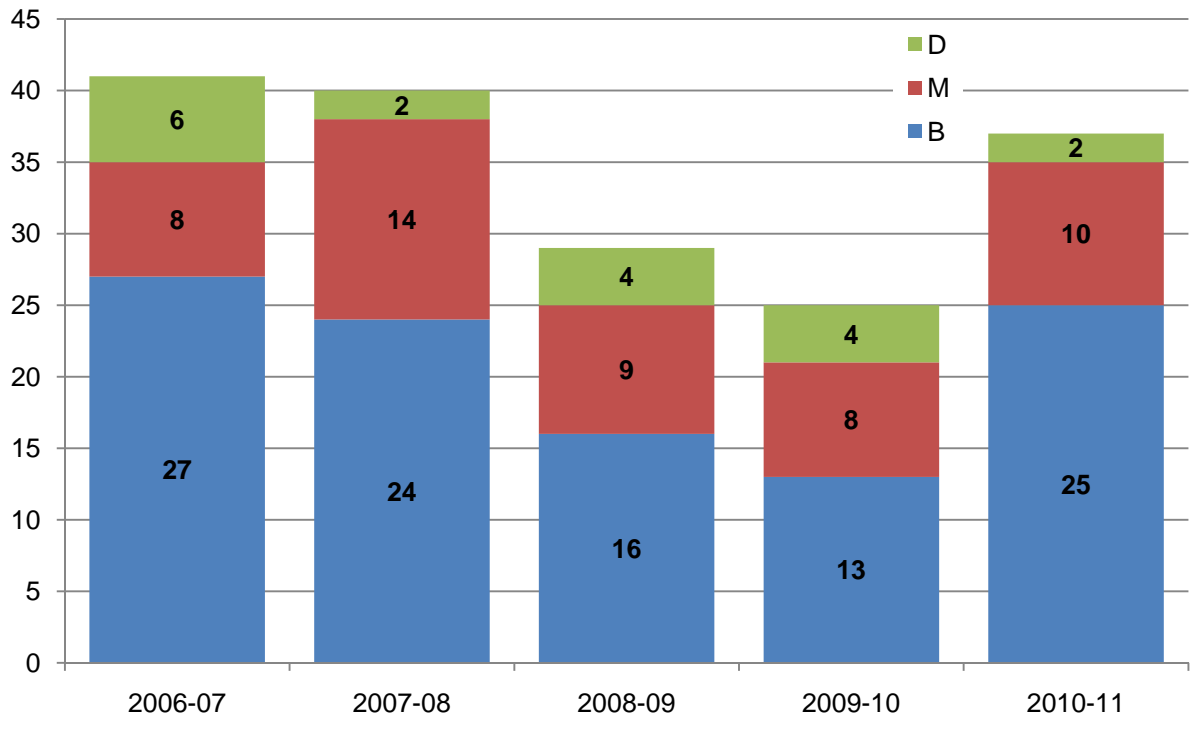


		2005	2006	2007	2008	2009	2010
Female	American Indian or Native Alaskan			1	1		
	Asian or Pacific Islander	1	1		1	1	3
	Black	9	9	7	4	5	4
	Hispanic	10	9	7	9	11	8
	Non-Resident Alien	7	11	10	3	3	2
	White	7	6	5	9	11	12
	Not Reported	1	1			1	1
Female	Total	35	37	30	27	32	30
Male	Asian or Pacific Islander	5	6	7	4	5	4
	Black	15	14	9	3	3	4
	Hispanic	20	18	8	9	12	16
	Non-Resident Alien	17	17	23	31	21	17
	White	23	18	15	17	22	27
	Not Reported	3	2		1	1	1
Male	Total	83	75	62	65	64	69
	Department Total	118	112	92	92	96	99

Source: Fall Preliminary Student Data Course Files

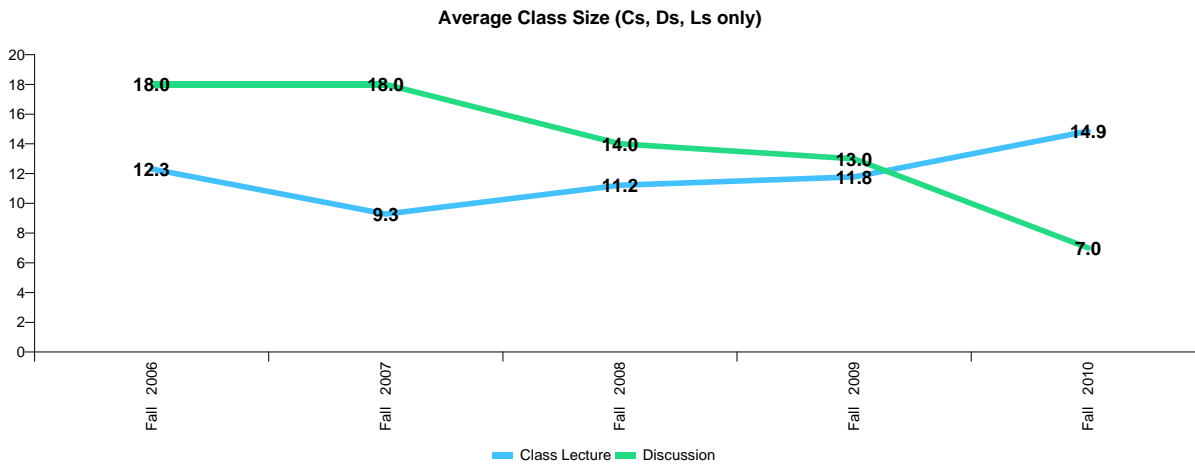
**COLLEGE OF ENGINEERING
INDUSTRIAL AND MANUFACTURING ENGINEERING
DEGREES AWARDED BY SEMESTER**

CIP Code: 143501



		Bachelors	Masters	Doctorate	Total
2006-07	Summer '06	1	2	3	6
	Fall '06	8	3	2	13
	Spring '07	18	3	1	22
2006-07	Total	27	8	6	41
2007-08	Summer '07	4	2	1	7
	Fall '07	11	9	1	21
	Spring '08	9	3	0	12
2007-08	Total	24	14	2	40
2008-09	Summer '08	6	3	2	11
	Fall '08	1	4	2	7
	Spring '09	9	2	0	11
2008-09	Total	16	9	4	29
2009-10	Summer '09	1	2	1	4
	Fall '09	0	5	2	7
	Spring '10	12	1	1	14
2009-10	Total	13	8	4	25
2010-11	Summer '10	0	6	1	7
	Fall '10	1	4	1	6
	Spring '11	24	0	0	24
2010-11	Total	25	10	2	37

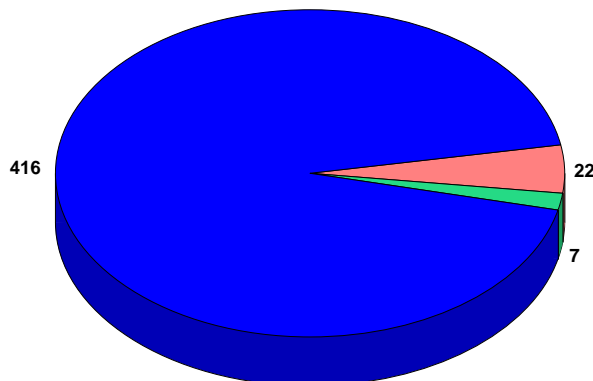
**COLLEGE OF ENGINEERING
INDUSTRIAL AND MANUFACTURING ENGINEERING
AVERAGE CLASS SIZE**



		Class Lecture			Discussion		
		Enrollment	Number of Sections	Class Size	Enrollment	Number of Sections	Class Size
Fall 2006	Lower	59	2	29.5			
	Upper	315	14	22.5			
	Graduate	94	22	4.3	18	1	18.0
	Total	468	38	12.3	18	1	18.0
Fall 2007	Lower	69	2	34.5			
	Upper	231	14	16.5			
	Graduate	99	27	3.7	18	1	18.0
	Total	399	43	9.3	18	1	18.0
Fall 2008	Lower	61	2	30.5			
	Upper	184	13	14.2			
	Graduate	69	13	5.3	14	1	14.0
	Total	314	28	11.2	14	1	14.0
Fall 2009	Lower	64	2	32.0			
	Upper	270	14	19.3			
	Graduate	78	19	4.1	13	1	13.0
	Total	412	35	11.8	13	1	13.0
Fall 2010	Lower	56	2	28.0			
	Upper	307	13	23.6			
	Graduate	53	13	4.1	7	1	7.0
	Total	416	28	14.9	7	1	7.0



Fall 2010 Enrollment by Class Type



**College of Engineering
Industrial and Manufacturing Engineering
Fundable Student Credit Hours and FTE**

SCH Produced

Summer

Level	2007	2008	2009	2010
Lower	24	26	16	12
Upper	45	14	18	20
Grad 1	11	9	39	30
Grad II	12	9	51	48
Total	92	58	124	110

Fall

Level	2007	2008	2009	2010
Lower	138	122	128	112
Upper	652	517	777	884
Grad 1	175	181	176	105
Grad II	210	152	158	131
Total	1,175	972	1,239	1,232

Spring

Level	2008	2009	2010	2011
Lower	116	134	94	94
Upper	399	425	558	623
Grad 1	147	183	134	65
Grad II	204	189	163	171
Total	866	931	949	953

Fall & Spring

Level	2007-08	2008-09	2009-10	2010-11
Lower	254	256	222	206
Upper	1,051	942	1,335	1,507
Grad 1	322	364	310	170
Grad II	414	341	321	302
Total	2,041	1,903	2,188	2,185

Annual

Level	2007-08	2008-09	2009-10	2010-11
Lower	278	282	238	218
Upper	1,096	956	1,353	1,527
Grad 1	333	373	349	200
Grad II	426	350	372	350
Total	2,133	1,961	2,312	2,295

Annual FTE Contribution

Summer

Level	2007	2008	2009	2010
Lower	0.6	0.7	0.4	0.3
Upper	1.1	0.4	0.5	0.5
Grad 1	0.3	0.3	1.2	0.9
Grad II	0.4	0.3	1.6	1.5
Total	2.4	1.6	3.7	3.2

Fall

Level	2007	2008	2009	2010
Lower	3.5	3.1	3.2	2.8
Upper	16.3	12.9	19.4	22.1
Grad 1	5.5	5.7	5.5	3.3
Grad II	6.6	4.8	4.9	4.1
Total	31.8	26.4	33.1	32.3

Spring

Level	2008	2009	2010	2011
Lower	2.9	3.4	2.4	2.4
Upper	10.0	10.6	14.0	15.6
Grad 1	4.6	5.7	4.2	2.0
Grad II	6.4	5.9	5.1	5.3
Total	23.8	25.6	25.6	25.3

Fall & Spring

Level	2007-08	2008-09	2009-10	2010-11
Lower	6.4	6.4	5.6	5.2
Upper	26.3	23.6	33.4	37.7
Grad 1	10.1	11.4	9.7	5.3
Grad II	12.9	10.7	10.0	9.4
Total	55.6	52.0	58.6	57.6

Annual

Level	2007-08	2008-09	2009-10	2010-11
Lower	7.0	7.1	6.0	5.5
Upper	27.4	23.9	33.8	38.2
Grad 1	10.4	11.7	10.9	6.3
Grad II	13.3	10.9	11.6	10.9
Total	58.1	53.5	62.3	60.8

Note: Lower and Upper hours are divided by 40 to obtain annual FTE; for Graduate I and Graduate II, hours are divided by 32

Source: Final Student Instruction Files (SIF)

Distribution of Annual FTE by Semester Within Year

	2007-08	2008-09	2009-10	2010-11
Summer	4.3%	3.0%	5.4%	4.8%
Fall	55.1%	49.6%	53.6%	53.7%
Spring	40.6%	47.5%	41.0%	41.5%
	100.0%	100.0%	100.0%	100.0%

**College of Engineering
Industrial and Manufacturing Engineering
Non-Fundable Student Credit Hours and FTE**

SCH Produced

Summer

Level	2007	2008	2009	2010
Lower	0	0	0	0
Upper	0	42	0	66
Grad 1	0	0	0	0
Grad II	0	0	0	0
Total	0	42	0	66

Fall

Level	2007	2008	2009	2010
Lower	0	0	0	0
Upper	0	0	0	2
Grad 1	0	0	0	0
Grad II	0	0	0	0
Total	0	0	0	2

Spring

Level	2008	2009	2010	2011
Lower	2	0	0	2
Upper	0	3	0	0
Grad 1	0	0	0	3
Grad II	0	0	0	0
Total	2	3	0	5

Fall & Spring

Level	2007-08	2008-09	2009-10	2010-11
Lower	2	0	0	2
Upper	0	3	0	2
Grad 1	0	0	0	3
Grad II	0	0	0	0
Total	2	3	0	7

Annual

Level	2007-08	2008-09	2009-10	2010-11
Lower	2	0	0	2
Upper	0	45	0	68
Grad 1	0	0	0	3
Grad II	0	0	0	0
Total	2	45	0	73

Annual FTE Contribution

Summer

Level	2007	2008	2009	2010
Lower	0.0	0.0	0.0	0.0
Upper	0.0	1.1	0.0	1.7
Grad 1	0.0	0.0	0.0	0.0
Grad II	0.0	0.0	0.0	0.0
Total	0.0	1.1	0.0	1.7

Fall

Level	2007	2008	2009	2010
Lower	0.0	0.0	0.0	0.0
Upper	0.0	0.0	0.0	0.1
Grad 1	0.0	0.0	0.0	0.0
Grad II	0.0	0.0	0.0	0.0
Total	0.0	0.0	0.0	0.1

Spring

Level	2008	2009	2010	2011
Lower	0.1	0.0	0.0	0.1
Upper	0.0	0.1	0.0	0.0
Grad 1	0.0	0.0	0.0	0.1
Grad II	0.0	0.0	0.0	0.0
Total	0.1	0.1	0.0	0.1

Fall & Spring

Level	2007-08	2008-09	2009-10	2010-11
Lower	0.1	0.0	0.0	0.1
Upper	0.0	0.1	0.0	0.1
Grad 1	0.0	0.0	0.0	0.1
Grad II	0.0	0.0	0.0	0.0
Total	0.1	0.1	0.0	0.2

Annual

Level	2007-08	2008-09	2009-10	2010-11
Lower	0.1	0.0	0.0	0.1
Upper	0.0	1.1	0.0	1.7
Grad 1	0.0	0.0	0.0	0.1
Grad II	0.0	0.0	0.0	0.0
Total	0.1	1.1	0.0	1.8

Note: Lower and Upper hours are divided by 40 to obtain annual FTE; for Graduate I and Graduate II, hours are divided by 32

Source: Final Student Instruction Files (SIF)

Distribution of Annual FTE by Semester Within Year

	2007-08	2008-09	2009-10	2010-11
Summer	0.0%	93.3%	#DIV/0	90.4%
Fall	0.0%	0.0%	#DIV/0	2.7%
Spring	100.0%	6.7%	#DIV/0	6.8%
Total	100.0%	100.0%	#DIV/0	100.0%

**College of Engineering
Industrial and Manufacturing Engineering
Total Student Credit Hours and FTE**

SCH Produced

Summer

Level	2007	2008	2009	2010
Lower	24	26	16	12
Upper	45	56	18	86
Grad 1	11	9	39	30
Grad II	12	9	51	48
Total	92	100	124	176

Fall

Level	2007	2008	2009	2010
Lower	138	122	128	112
Upper	652	517	777	886
Grad 1	175	181	176	105
Grad II	210	152	158	131
Total	1,175	972	1,239	1,234

Spring

Level	2008	2009	2010	2011
Lower	118	134	94	96
Upper	399	428	558	623
Grad 1	147	183	134	68
Grad II	204	189	163	171
Total	868	934	949	958

Fall & Spring

Level	2007-08	2008-09	2009-10	2010-11
Lower	256	256	222	208
Upper	1,051	945	1,335	1,509
Grad 1	322	364	310	173
Grad II	414	341	321	302
Total	2,043	1,906	2,188	2,192

Annual

Level	2007-08	2008-09	2009-10	2010-11
Lower	280	282	238	220
Upper	1,096	1,001	1,353	1,595
Grad 1	333	373	349	203
Grad II	426	350	372	350
Total	2,135	2,006	2,312	2,368

Annual FTE Contribution

Summer

Level	2007	2008	2009	2010
Lower	0.6	0.7	0.4	0.3
Upper	1.1	1.4	0.5	2.2
Grad 1	0.3	0.3	1.2	0.9
Grad II	0.4	0.3	1.6	1.5
Total	2.4	2.6	3.7	4.9

Fall

Level	2007	2008	2009	2010
Lower	3.5	3.1	3.2	2.8
Upper	16.3	12.9	19.4	22.2
Grad 1	5.5	5.7	5.5	3.3
Grad II	6.6	4.8	4.9	4.1
Total	31.8	26.4	33.1	32.3

Spring

Level	2008	2009	2010	2011
Lower	3.0	3.4	2.4	2.4
Upper	10.0	10.7	14.0	15.6
Grad 1	4.6	5.7	4.2	2.1
Grad II	6.4	5.9	5.1	5.3
Total	23.9	25.7	25.6	25.4

Fall & Spring

Level	2007-08	2008-09	2009-10	2010-11
Lower	6.4	6.4	5.6	5.2
Upper	26.3	23.6	33.4	37.7
Grad 1	10.1	11.4	9.7	5.4
Grad II	12.9	10.7	10.0	9.4
Total	55.7	52.1	58.6	57.8

Annual

Level	2007-08	2008-09	2009-10	2010-11
Lower	7.0	7.1	6.0	5.5
Upper	27.4	25.0	33.8	39.9
Grad 1	10.4	11.7	10.9	6.3
Grad II	13.3	10.9	11.6	10.9
Total	58.1	54.7	62.3	62.7

Note: Lower and Upper hours are divided by 40 to obtain annual FTE; for Graduate I and Graduate II, hours are divided by 32

Source: Final Student Instruction Files (SIF)

Distribution of Annual FTE by Semester Within Year

	2007-08	2008-09	2009-10	2010-11
Summer	4.3%	5.0%	5.4%	7.4%
Fall	55.0%	48.5%	53.6%	52.1%
Spring	40.7%	46.6%	41.0%	40.5%
Total	100.0%	100.0%	100.0%	100.0%

**Department of Industrial & Manufacturing Engineering
All Student Credit Hours and Headcount Productivity
By Instructor Type**

	Student						Student				
	FTE	Credit Hrs	SCH/FTE	Headcount	FTE		FTE	Credit Hrs	SCH/FTE	Headcount	FTE
<u>Fall 2005</u>						<u>Spring 2006</u>					
Faculty	7.00	494.0	70.6	161.0	23.0	Faculty	7.00	449.0	64.1	135	19.3
OPS Regular Faculty	0.00	0.0	0.0	0.0	0.0	OPS Regular Faculty	0.00	0.0	0.0	0	0.0
OPS Faculty Adjuncts	0.40	298.0	745.0	149.0	372.5	OPS Faculty Adjuncts	0.60	321.0	535.0	151	251.7
Graduate Assistants	1.93	0.0	0.0	0.0	0.0	Graduate Assistants	1.90	0.0	0.0	0	0.0
A & P / USPS	1.00	81.0	81.0	27.0	27.0	A & P / USPS	0.00	0.0	0.0	0	0.0
Others	2.67	382.0	143.1	103.0	38.6	Others	2.40	286.0	119.2	94	39.2
	13.00	1255.0	96.5	440.0	33.8		11.90	1056.0	88.7	380	31.9
<u>Fall 2006</u>						<u>Spring 2007</u>					
Faculty	6.97	847.0	121.6	302.0	43.4	Faculty	7.14	524.0	73.4	160	22.4
OPS Regular Faculty	0.00	0.0	0.0	0.0	0.0	OPS Regular Faculty	0.20	123.0	615.0	59	295.0
OPS Faculty Adjuncts	0.20	118.0	590.0	59.0	295.0	OPS Faculty Adjuncts	0.40	30.0	75.0	10	25.0
Graduate Assistants	2.45	0.0	0.0	0.0	0.0	Graduate Assistants	2.42	0.0	0.0	0	0.0
A & P / USPS	1.00	93.0	93.0	31.0	31.0	A & P / USPS	0.00	0.0	0.0	0	0.0
Others	1.65	199.0	120.6	49.0	0.0	Others	2.33	382.0	163.9	121	51.9
	12.27	1,257.0	102.5	441.0	36.0		12.49	1,059.0	84.8	350	28.0
<u>Fall 2007</u>						<u>Spring 2008</u>					
Faculty	9.42	627.0	66.6	215.0	22.8	Faculty	9.72	408.0	42.0	126	13.0
OPS Regular Faculty	0.21	21.0	100.0	7.0	33.3	OPS Regular Faculty	0.60	54.0	90.0	18	30.0
OPS Faculty Adjuncts	0.21	192.0	913.9	123.0	585.4	OPS Faculty Adjuncts	0.40	157.0	392.5	72	180.0
Graduate Assistants	2.77	0.0	0.0	0.0	0.0	Graduate Assistants	2.02	0.0	0.0	0	0.0
A & P / USPS	1.00	78.0	78.0	26.0	26.0	A & P / USPS	1.00	15.0	15.0	5	5.0
Others	1.67	240.0	143.7	99.0	59.3	Others	1.30	210.0	161.5	85	65.4
	15.28	1,158.0	75.8	470.0	30.8		15.04	844.0	56.1	306	20.3
<u>Fall 2008</u>						<u>Spring 2009</u>					
Faculty	10.93	459.0	42.0	134.0	12.3	Faculty	10.62	519.0	48.9	151	14.2
OPS Regular Faculty	0.00	0.0	0.0	0.0	0.0	OPS Regular Faculty	0.00	0.0	0.0	0	0.0
OPS Faculty Adjuncts	0.89	196.0	221.0	121.0	136.4	OPS Faculty Adjuncts	0.53	0.0	0.0	0	0.0
Graduate Assistants	8.13	0.0	0.0	0.0	0.0	Graduate Assistants	8.28	0.0	0.0	0	0.0
A & P / USPS	3.00	33.0	0.0	11.0	0.0	A & P / USPS	1.56	0.0	0.0	0	0.0
Others	6.14	313.0	51.0	128.0	20.9	Others	5.08	254.0	50.0	107	21.1
	29.08	1,001.0	34.4	394.0	13.5		26.07	773.0	29.7	258	9.9
<u>Fall 2009</u>						<u>Spring 2010</u>					
Faculty	8.91	658.0	73.9	198.0	22.2	Faculty	9.00	636.0	70.7	216	24.0
OPS Regular Faculty	0.00	0.0	0.0	0.0	0.0	OPS Regular Faculty	0.00	0.0	0.0	0	0.0
OPS Faculty Adjuncts	0.64	309.0	484.1	148.0	231.9	OPS Faculty Adjuncts	0.64	148.0	233.0	65	102.3
Graduate Assistants	1.41	0.0	0.0	0.0	0.0	Graduate Assistants	2.57	0.0	0.0	0	0.0
A & P / USPS	1.00	42.0	0.0	14.0	0.0	A & P / USPS	1.00	27.0	27.0	9	9.0
Others	0.75	183.0	244.0	61.0	81.3	Others	0.60	126.0	211.7	42	70.6
	12.70	1,192.0	93.8	421.0	33.1		13.80	937.0	67.9	332	24.1

Industrial & Manufacturing Engineering - Faculty Courses & Hours

Fall 2005 - Spring 2006				Organized Classes (C,D,L)								
Faculty Member	Class	Pay	FTE	SCH		Total SCH	Headcount		Total HC	Sections		Total #Sec.
				UGrad	Grad		UGrad	Grad		UGrad	Grad	
BOGINISKI	9003	22	2.00	78.0	57.0	135.0	26.0	18.0	44.0	1.0	2.0	3.0
LIANG	9002	22	2.00	-	96.0	96.0	-	29.0	29.0	-	13.0	13.0
OKOLI	9002	22	2.00	168.0	18.0	186.0	56.0	6.0	62.0	4.0	3.0	7.0
PIGNATIELLO	9002	22	2.00	78.0	73.5	151.5	26.0	23.0	49.0	1.0	3.5	4.5
SIMPSON	9002	22	2.00	78.0	67.5	145.5	26.0	33.0	59.0	1.0	4.5	5.5
WANG	9001	22	2.00	-	21.0	21.0	-	7.0	7.0	-	2.0	2.0
ZHANG	9001	22	2.00	-	57.0	57.0	-	18.0	18.0	-	3.0	3.0
GOMEZ	9004	06	0.20	57.0	-	57.0	19.0	-	19.0	1.0	-	1.0
MOSHIR	9001	06	0.40	244.0	-	244.0	122.0	-	122.0	4.0	-	4.0
WANG	9001	06	0.40	318.0	-	318.0	159.0	-	159.0	4.0	-	4.0
TAYLOR	9444	20	1.00	81.0	-	81.0	27.0	-	27.0	1.0	-	1.0
MALEK	9003	98	0.25	21.0	-	21.0	7.0	-	7.0	1.0	-	1.0
OWUSU	9002	98	1.67	207.0	27.0	234.0	69.0	9.0	78.0	2.0	3.0	5.0
PARK	9003	98	1.82	253.0	15.0	268.0	63.0	4.0	67.0	3.0	3.0	6.0
PARKER	9003	98	1.33	84.0	24.0	108.0	28.0	8.0	36.0	1.0	4.0	5.0
TOTALS				1,667.0	456.0	2,123.0	628.0	155.0	783.0	24.0	41.0	65.0
AVERAGE PER FACULTY				138.9	45.6	141.5	52.3	15.5	52.2	2.0	4.1	4.3

Industrial & Manufacturing Engineering - Faculty Courses & Hours

Fall 2005 - Spring 2006				Individualized (G,T,I,O,P,R,S,Z)								
Faculty Member	Class	Pay	FTE	SCH		Total SCH	Headcount		Total HC	Sections		Total #Sec.
				UGrad	Grad		UGrad	Grad		UGrad	Grad	
BOGINISKI	9003	22	2.00	-	-	-	-	-	-	-	-	-
LIANG	9002	22	2.00	3.0	58.0	61.0	1.0	7.0	8.0	1.0	3.0	4.0
OKOLI	9002	22	2.00	3.0	13.0	16.0	1.0	5.0	6.0	1.0	2.0	3.0
PIGNATIELLO	9002	22	2.00	-	-	-	-	-	-	-	-	-
SIMPSON	9002	22	2.00	-	48.0	48.0	-	6.0	6.0	-	4.0	4.0
WANG	9001	22	2.00	-	9.0	9.0	-	2.0	2.0	-	2.0	2.0
ZHANG	9001	22	2.00	-	17.0	17.0	-	6.0	6.0	-	4.0	4.0
GOMEZ	9004	06	0.20	-	-	-	-	-	-	-	-	-
MOSHIR	9001	06	0.40	-	-	-	-	-	-	-	-	-
WANG	9001	06	0.40	-	-	-	-	-	-	-	-	-
TAYLOR	9444	20	1.00	-	-	-	-	-	-	-	-	-
MALEK	9003	98	0.25	-	-	-	-	-	-	-	-	-
OWUSU	9002	98	1.67	6.0	16.0	22.0	2.0	4.0	6.0	1.0	2.0	3.0
PARK	9003	98	1.82	-	9.0	2.0	-	2.0	2.0	-	2.0	2.0
PARKER	9003	98	1.33	-	6.0	6.0	-	1.0	1.0	-	1.0	1.0
TOTALS				12.0	176.0	181.0	4.0	33.0	37.0	3.0	20.0	23.0
AVERAGE PER FACULTY				4.0	22.0	22.6	1.3	4.1	4.6	1.0	2.5	2.9

Industrial & Manufacturing Engineering - Faculty Courses & Hours

Fall 2005 - Spring 2006				All Types								
Faculty Member	Class	Pay	FTE	SCH		TOTAL	Headcount		TOTAL	Sections		TOTAL
				UGrad	Grad	SCH	UGrad	Grad	HC	UGrad	Grad	#Sec.
BOGINISKI	9003	22	2.00	78.0	57.0	135.0	26.0	18.0	44.0	1.0	2.0	3.0
LIANG	9002	22	2.00	3.0	154.0	157.0	1.0	36.0	37.0	1.0	16.0	17.0
OKOLI	9002	22	2.00	171.0	31.0	202.0	57.0	11.0	68.0	5.0	5.0	10.0
PIGNATIELLO	9002	22	2.00	78.0	73.5	151.5	26.0	23.0	49.0	1.0	3.5	4.5
SIMPSON	9002	22	2.00	78.0	115.5	193.5	26.0	39.0	65.0	1.0	8.5	9.5
WANG	9001	22	2.00	-	30.0	30.0	-	9.0	9.0	-	4.0	4.0
ZHANG	9001	22	2.00	-	74.0	74.0	-	24.0	24.0	-	7.0	7.0
GOMEZ	9004	06	0.20	57.0	-	57.0	19.0	-	19.0	1.0	-	1.0
MOSHIR	9001	06	0.40	244.0	-	244.0	122.0	-	122.0	4.0	-	4.0
WANG	9001	06	0.40	318.0	-	318.0	159.0	-	159.0	4.0	-	4.0
TAYLOR	9444	20	1.00	81.0	-	81.0	27.0	-	27.0	1.0	-	1.0
MALEK	9003	98	0.25	21.0	-	21.0	7.0	-	7.0	1.0	-	1.0
OWUSU	9002	98	1.67	213.0	43.0	256.0	71.0	13.0	84.0	3.0	5.0	8.0
PARK	9003	98	1.82	253.0	24.0	277.0	63.0	6.0	69.0	3.0	5.0	8.0
PARKER	9003	98	1.33	84.0	30.0	114.0	28.0	9.0	37.0	1.0	5.0	6.0
TOTALS				1,679.0	632.0	2,311.0	632.0	188.0	820.0	27.0	61.0	88.0
AVERAGE PER FACULTY				129.2	63.2	154.1	48.6	18.8	54.7	2.1	6.1	5.9

Industrial & Manufacturing Engineering - Faculty Courses & Hours

Fall 2009 - Spring 2010				Organized Classes (C,D,L)								
Faculty Member	Class	Pay	FTE	SCH		Total SCH	Headcount		Total HC	Sections		Total #Sec.
				UGrad	Grad		UGrad	Grad		UGrad	Grad	
LIANG	9001	22	1.99	67.5	66.5	134.0	13.5	20.5	34.0	1.0	11.5	12.5
LIU	9003	22	1.99	84.0	30.0	114.0	28.0	9.0	37.0	1.0	2.0	3.0
OKOLI	9002	22	1.99	87.0	33.0	120.0	29.0	21.0	50.0	3.0	5.0	8.0
PIGNATIELLO	9002	22	1.99	108.0	75.0	183.0	36.0	25.0	61.0	2.0	2.0	4.0
VANLI	9003	22	1.99	126.0	15.0	141.0	42.0	5.0	47.0	2.0	1.0	3.0
WANG	9001	22	1.99	-	36.0	36.0	-	12.0	12.0	-	2.0	2.0
ZENG	9003	22	1.99	66.0	48.0	114.0	22.0	16.0	38.0	1.0	4.5	5.5
ZHANG	9001	22	1.99	126.0	45.0	171.0	63.0	15.0	78.0	2.0	4.5	6.5
ZHANG	9002	22	1.99	67.5	31.5	99.0	13.5	10.5	24.0	1.0	1.5	2.5
CHAPMAN	9004	22	0.30	181.0	-	181.0	84.0	-	84.0	3.0	-	3.0
GOMEZ	9004	06	0.21	54.0	-	54.0	18.0	-	18.0	1.0	-	1.0
MOSHIR	9001	98	0.42	222.0	-	222.0	111.0	-	111.0	4.0	-	4.0
TAYLOR	9425	98	2.00	69.0	-	69.0	23.0	-	23.0	2.0	-	2.0
AWONIYI	9001	98	1.29	252.0	54.0	306.0	84.0	18.0	102.0	3.0	2.0	5.0
TOTALS				1,510.0	434.0	1,944.0	567.0	152.0	719.0	26.0	36.0	62.0
AVERAGE PER FACULTY				116.2	43.4	138.9	43.6	15.2	51.4	2.0	3.6	4.4

Industrial & Manufacturing Engineering - Faculty Courses & Hours

Fall 2009 - Spring 2010				Individualized (G,T,I,O,P,R,S,Z)								
Faculty Member	Class	Pay	FTE	SCH		Total SCH	Headcount		Total HC	Sections		Total #Sec.
				UGrad	Grad		UGrad	Grad		UGrad	Grad	
LIANG	9001	22	1.99	6.0	70.0	76.0	2.0	13.0	15.0	2.0	4.0	6.0
LIU	9003	22	1.99	-	12.0	12.0	-	2.0	2.0	-	2.0	2.0
OKOLI	9002	22	1.99	-	45.0	45.0	-	6.0	6.0	-	3.0	3.0
PIGNATIELLO	9002	22	1.99	-	-	-	-	-	-	-	-	-
VANLI	9003	22	1.99	-	12.0	12.0	-	3.0	3.0	-	2.0	2.0
WANG	9001	22	1.99	-	9.0	9.0	-	1.0	1.0	-	1.0	1.0
ZENG	9003	22	1.99	-	9.0	9.0	-	2.0	2.0	-	2.0	2.0
ZHANG	9001	22	1.99	-	19.0	19.0	-	4.0	4.0	-	2.0	2.0
ZHANG	9002	22	1.99	-	-	-	-	-	-	-	-	-
CHAPMAN	9004	22	0.30	-	-	-	-	-	-	-	-	-
GOMEZ	9004	06	0.21	-	-	-	-	-	-	-	-	-
MOSHIR	9001	98	0.42	-	-	-	-	-	-	-	-	-
TAYLOR	9425	98	2.00	-	-	-	-	-	-	-	-	-
AWONIYI	9001	98	1.29	3.0	-	3.0	1.0	-	1.0	1.0	-	1.0
TOTALS				9.0	176.0	185.0	3.0	31.0	34.0	3.0	16.0	19.0
AVERAGE PER FACULTY				4.5	25.1	23.1	1.5	4.4	4.3	1.5	2.3	2.4

Industrial & Manufacturing Engineering - Faculty Courses & Hours

Fall 2009 - Spring 2010				All Types								
Faculty Member	Class	Pay	FTE	SCH		TOTAL	Headcount		TOTAL	Sections		TOTAL
				UGrad	Grad	SCH	UGrad	Grad	HC	UGrad	Grad	#Sec.
LIANG	9001	22	1.99	73.5	136.5	210.0	15.5	33.5	49.0	3.0	15.5	18.5
LIU	9003	22	1.99	84.0	42.0	126.0	28.0	11.0	39.0	1.0	4.0	5.0
OKOLI	9002	22	1.99	87.0	78.0	165.0	29.0	27.0	56.0	3.0	8.0	11.0
PIGNATIELLO	9002	22	1.99	108.0	75.0	183.0	36.0	25.0	61.0	2.0	2.0	4.0
VANLI	9003	22	1.99	126.0	27.0	153.0	42.0	8.0	50.0	2.0	3.0	5.0
WANG	9001	22	1.99	-	45.0	45.0	-	13.0	13.0	-	3.0	3.0
ZENG	9003	22	1.99	66.0	57.0	123.0	22.0	18.0	40.0	1.0	6.5	7.5
ZHANG	9001	22	1.99	126.0	64.0	190.0	63.0	19.0	82.0	2.0	6.5	8.5
ZHANG	9002	22	1.99	67.5	31.5	99.0	13.5	10.5	24.0	1.0	1.5	2.5
CHAPMAN	9004	22	0.30	181.0	-	181.0	84.0	-	84.0	3.0	-	3.0
GOMEZ	9004	06	0.21	54.0	-	54.0	18.0	-	18.0	1.0	-	1.0
MOSHIR	9001	98	0.42	222.0	-	222.0	111.0	-	111.0	4.0	-	4.0
TAYLOR	9425	98	2.00	69.0	-	69.0	23.0	-	23.0	2.0	-	2.0
AWONIYI	9001	98	1.29	255.0	54.0	309.0	85.0	18.0	103.0	4.0	2.0	6.0
TOTALS				1,519.0	610.0	2,129.0	570.0	183.0	753.0	29.0	52.0	81.0
AVERAGE PER FACULTY				116.8	61.0	152.1	43.8	18.3	53.8	2.2	5.2	5.8

**Operating Budget E&G Position FTE and Rate Totals
By Pay Plan, Month Type, Filled/Vacant, and Rank**

College of Engineering

Industrial & Manufacturing Eng

		2006-07	2007-08	2008-09	2009-10	2010-11
Total All Pay Plans	FTE	6.00	8.25	7.95	9.25	9.25
	Person Years	4.74	5.61	5.58	6.61	6.61
	Current Rate	\$538,596	\$624,050	\$610,519	\$675,822	\$675,822
Filled 9- & 12-Month Faculty	FTE	4.00	6.00	6.00	6.00	6.00
	Person Years	2.99	4.48	4.48	4.48	4.48
	Current Rate	\$395,326	\$548,623	\$548,623	\$565,082	\$565,082
Vacant & Reserve Faculty	FTE	1.00				
	Person Years	0.75				
	Current Rate	\$90,276				
Summer Faculty	FTE		1.25	0.95	1.25	1.25
	Person Years		0.13	0.10	0.13	0.13
	Current Rate		\$21,850	\$14,813	\$22,505	\$22,505
Filled Support	FTE	1.00	1.00	1.00	2.00	2.00
	Person Years	1.00	1.00	1.00	2.00	2.00
	Current Rate	\$52,994	\$53,577	\$47,083	\$88,235	\$88,235

Source: Office of Institutional Research

E & G Expenditures by Budget Category, By Major Object code, Departments within School

College of Engineering

Industrial & Manufacturing Eng

Category Code	Oject Code	2005-06	2006-07	2007-08	2008-09	2009-10
SALARY	FACULTY	\$667,913	\$432,406	\$594,322	\$612,700	\$619,261
	A&P	\$104,156	\$52,587	\$28,913	\$62,787	\$88,165
	FRINGE BENEFITS	\$195,447	\$115,579	\$160,190	\$174,563	\$188,792
	OTHER SALARY			\$9,032		
SALARY		\$967,516	\$600,572	\$792,457	\$850,050	\$896,218
EXPENSE	CONSTRUCTION SUPPLIES				\$34	
	CONSULTING & OTHER				\$90	
	EDUCATIONAL SUPPLIES			\$1,402	\$2,098	
	EQUIPMENT & BOOKS			\$188	\$5,501	\$120
	EXPENSE OTHER			\$44		
	MAINT & HEATING SUPPLIES				\$294	
	OFFICE SUPPLIES			\$434	\$191	\$1,393
	OTHER MATERIALS & SUPPLIES			\$335	\$584	\$675
	TELEPHONE	\$792	\$792	\$882	\$534	\$605
	TRAVEL			\$1,869	\$142	\$2,798
	POSTAGE					\$86
	FREIGHT				\$21	\$201
EXPENSE		\$792	\$792	\$5,154	\$9,489	\$5,878
OPS	FRINGE BENEFITS	\$2,724			\$138	
	FACULTY ADJUNCTS	\$37,293			\$9,504	
	GRAD ASST	\$45,410			\$5,323	
	OPS OTHER	\$7,028				
	STUDENT ASST	\$10,197				
OPS		\$102,652			\$14,965	
	Department Total:	\$1,070,960	\$601,364	\$797,611	\$874,504	\$902,096

Program : Industrial & Manufacturing Engineering

Number of students who entered the program between 1999 and 2009					Record the number who within the various time spans listed below completed degree within given number of years after enrolling								
	Number of entering doctoral students	Number of students who left the program without a master's or doctoral degree	Number of students who left the program after receiving a master's degree or specialist	Number of students admitted to doctoral candidacy	3 years or less	4 years	5 years	6 years	7 years	8 years	9 years	10 years or more	Number still enrolled after 10 years
1999-2000	5	1	2	3		1	1						
2000-2001	1			1		1							
2001-2002	3			3		1	1	1					
2002-2003	1			1				1					
2003-2004	9			4		3		1					
2004-2005	5	1		4		1	3						
2005-2006	4	1		3			2						
2006-2007	9	1	5	2		1	1						
2007-2008	8	3		3									
2008-2009	3			2									
2009-2010	6												

**Quality Enhancement Review
Unit Accomplishment Summary
Teaching and Research Overview
2009-2010**

**Name of Program:
Industrial Engineering**

Faculty member	Instructional assignment (%)	Number of organized courses taught (C,D,L)	Number of individualized courses (G,T,I,O,P,R,S,Z)	Instructional contact hours	Number of directed individual studies (DIS)	Number of PhD students supervised	Research assignment (%)	NRC-countable publications and/or creative products	ALL SOURCES			
									Number of proposals submitted	Number of proposals funded	Total grant funds awarded	Number of honors and awards
LIANG		12.5	6.0	59.0								
LIU		3.0	2.0	15.5								
OKOLI		8.0	3.0	33.0								
PIGNATIELLO		4.0	0.0	10.5								
VANLI		3.0	2.0	12.0								
WANG		2.0	1.0	7.0								
ZENG		5.5	2.0	18.5								
ZHANG C		6.5	2.0	21.5								
ZHANG M		2.5	0.0	8.5								
CHAPMAN		3.0	0.0	7.0								
GOMEZ		1.0	0.0	3.0								
MOSHIR		4.0	0.0	8.0								
ATAYLOR		2.0	0.0	6.0								
AWONIYI		5.0	1.0	15.5								
SUM		62.0	19.0	225.0								
MEAN		3.9	0.9	12.5								
MEDIAN		3.5	0.5	9.5								

**Quality Enhancement Review
Unit Accomplishment Summary
Instructional Activities
2009-2010**

Name of Program: Industrial Engineering

Faculty member	Instructional assignment (%)	Number of organized courses taught (C,D,L)	Total enrollment	Number of individualized courses (G,T,I,O,P,R,S,Z)	Total enrollment	Total instructional contact hours	Total student credit hours	Number of honors courses	Number of thesis/dissertation student committees
LIANG		12.5	34.0	6.0	15	59.0	210.0		
LIU		3.0	37.0	2.0	2	15.5	126.0		
OKOLI		8.0	50.0	3.0	6	33.0	165.0		
PIGNATIELLO		4.0	61.0	0.0	0	10.5	183.0		
VANLI		3.0	47.0	2.0	3	12.0	153.0		
WANG		2.0	12.0	1.0	1	7.0	45.0		
ZENG		5.5	38.0	2.0	2	18.5	123.0		
ZHANG C		6.5	78.0	2.0	4	21.5	190.0		
ZHANG M		2.5	24.0	0.0	0	8.5	99.0		
CHAPMAN		3.0	84.0	0.0	0	7.0	181.0		
GOMEZ		1.0	18.0	0.0	0	3.0	54.0		
MOSHIR		4.0	111.0	0.0	0	8.0	222.0		
ATAYLOR		2.0	23.0	0.0	0	6.0	69.0		
AWONIYI		5.0	102.0	1.0	1	15.5	309.0		
SUM		62.0	719.0	19.0	34.0	225.0	2129.0		
MEAN		4	68	1	3	16	140.0		
MEDIAN		3.0	38	1.0	1	10.5	153.0		