

# Mechanical Engineering Data Booklet

Fall Term 2011  
Quality Enhancement  
Review

Prepared by the Office of Institutional Research



**Mechanical Engineering  
FALL TERM 2011**

Most recent available statistics

		Report <u>Page No(s)</u>
Degrees Offered	5	1
Faculty	23	2
Majors (Fall 2010 Headcount)		
Undergraduate	243	3-5
Graduate - Masters	30	3-5
Graduate - Specialist	-	3-5
Graduate - Doctorate	32	3-5
Total	305	3-5
2010-2011 Degrees Awarded		
Bachelors	62	6
Masters	12	6
Specialist	-	6
Doctorate	6	6
Total	80	6
Average Class Size (Fall 2010)		
Undergraduate		
Lower - classroom	0.0	7
Upper - classroom	24.4	7
Graduate - classroom	8.7	7
Credit Hours - Annual (2010-2011)		
Fundable	7,154	8
Non-fundable	22	9
Total	7,176	10
University (fundable)	1,074,302	SIF*
2010-2011 Department Fundable Hours As Percent of University Fundable Hours	0.7%	calculated
Student FTE's- Annual (state fundable 2010-2011)		
Lower	-	8
Upper	145.7	8
Grad I	19.8	8
Grad II	21.7	8
Total	187.2	8
Credit Hours Percentages by Instructor Type (Fall 2009)		11
Faculty	62.8%	calculated
OPS Regular Faculty	0.0%	calculated
OPS Faculty Adjuncts	8.9%	calculated
Graduate Assistants	0.0%	calculated
A&P/USPS	0.0%	calculated
Phased Retirement	0.0%	calculated
Others	28.2%	calculated
Average Total Credit Hours Taught per Faculty FTE (All Hours, 2009-2010)		
Fall Term	102.4	11
Spring Term	129.9	11
Academic Year	232.3	calculated
Annual Student FTE's Taught by all Faculty (Fall & Spring total hrs converted to annual FTE's, 2009-2010)		15
Undergraduate (academic year hours/40)	115.7	calculated
Graduate (academic year hours/32)	28.6	calculated
Total	144.3	calculated

*Note: most statistics are based on the Mechanical Engineering account 218xxx. Related accounts may not be included in expenditures and in faculty courses and hours taught. \*SIF=Student Information File*

# Mechanical Engineering

## Fall Term 2011

### Table of Contents

	<u>Page</u>
Degree Programs .....	1
The Faculty.....	2
Enrollment by major .....	3
Degrees Awarded.....	6
Average Class Size .....	7
Credit Hours by Semester/Fall & Spring/Annual	
Fundable .....	8
Non-fundable.....	9
Total .....	10
Credit Hours and Courses by Instructor Type.....	
E&G Detail 2005-06 to 2009-10 .....	11
Faculty Courses and Hours 2005-06 and 2009-10	
(Individual Faculty Summary)	
2005-06 .....	12
2009-10 .....	14
E&G Budgeted Faculty and Staff Lines.....	16
E&G Expenditures by Summary Object Code .....	17
Graduate Student Completion .....	18
Unit Accomplishment Summary Pages 1 and 2.....	19

**COLLEGE OF ENGINEERING  
MECHANICAL ENGINEERING  
DEGREE PROGRAMS**

<b>Major Name</b>	<b>Major Code</b>	<b>CIP Code</b>	<b>Degree Offered</b>
Mechanical Engineering	554010	141901	Bachelors
Mechanical Engineering	554010	141901	Masters
Mechanical Engineering	554010	141901	Doctorate

<b>Major Name</b>	<b>Major Code</b>	<b>CIP Code</b>	<b>Degree Offered</b>
Computational Materials Science and Mechanics	554011	141901	Doctorate

<b>Major Name</b>	<b>Major Code</b>	<b>CIP Code</b>	<b>Degree Offered</b>
Sustainable Energy	554012	141901	Masters

*Source: Degree Program Inventory, FSU and SUS*

**COLLEGE OF ENGINEERING  
MECHANICAL ENGINEERING  
FACULTY DEMOGRAPHICS**

**Florida State University**

**Admin.**

Last Name	First Name	Degree	Degree University	Code	Class & Title	Mo.	Tenure	FSU Hire	Gender	Race	Citizenship
Alvi	Farrukh	Ph.D.	Pennsylvania State University	C4	9001 - Professor	9	1	1995-08-08	Male	Asian	U.S. Citizen
Cartes	David	Ph.D.	Dartmouth College	G2	9002 - Associate Professor	9	1	2001-02-09	Male	White	U.S. Citizen
Chen	Ching-Jen	Ph.D.	Case Western Reserve Univ.	99	9001 - Professor	9	1	1992-08-01	Male	Asian	U.S. Citizen
Clark	Jonathan	Ph.D.	Stanford University	99	9003 - Assistant Professor	9	2	2007-08-09	Male	White	U.S. Citizen
Collins	Emmanuel	Ph.D.	Purdue University Main Campus	99	9001 - Professor	9	1	1994-07-01	Male	Black	U.S. Citizen
Englander	Ongi	Ph.D.	University Of California-Berkely	99	9003 - Assistant Professor	9	2	2007-08-09	Female	White	U.S. Citizen
Hellstrom	Eric	Ph.D.	Stanford University	99	9001 - Professor	9	1	2007-08-09	Male	White	U.S. Citizen
Hollis	Patrick	Ph.D.	Cornell University	G1	9002 - Associate Professor	9	1	1987-08-07	Male	White	U.S. Citizen
Krothapalli	Anjaneyulu	Ph.D.	Stanford University	99	9009 - Eminent Scholar	9	1	1983-08-05	Male	Asian	U.S. Citizen
Larbalestier	David	Ph.D.	University of London	99	9001 - Professor	9	1	2006-03-04	Male	White	U.S. Citizen
Lourenco	Luiz	Ph.D.	University of Brussels, Belgium	99	9001 - Professor	9	1	1985-01-30	Male	White	U.S. Citizen
Oates	William	Ph.D.	Georgia Institute Of Technolog	99	9003 - Assistant Professor	9	2	2006-08-09	Male	White	U.S. Citizen
Ordonez	Juan	Ph.D.	Duke University	99	9002 - Associate Professor	9	1	2003-08-08	Male	Hispanic	U.S. Citizen
Shih	Chiang	Ph.D.	Univ. Of Southern California	C1	9001 - Professor	9	1	1988-12-21	Male	Asian	U.S. Citizen
Van Dommelen	Leonard	Ph.D.	Cornell University	99	9001 - Professor	9	1	1984-04-24	Male	Asian	U.S. Citizen
Van Sciver	Steven	Ph.D.	University of Washington	T1	9001 - Professor	9	1	1991-08-08	Male	White	U.S. Citizen
Celik	Dogan	Ph.D.		99	9162 - Assistant Scholar/Scientist/Engineer	12	3	2010-01-01	Male	White	Resident Alien
Cloos	Jonathan	Bach.	University Of Arizona	99	9120 - Associate In	12	3	1992-08-14	Male	White	U.S. Citizen
Kumar	Rajan	Ph.D.		99	9160 - Scholar/Scientist/Engineer	12	3	2008-06-06	Male	Other	U.S. Citizen
Larson	Keith	Bach.	Florida State University	99	9120 - Associate In	12	3	2003-01-27	Male	White	U.S. Citizen

**Florida A&M University**

**Admin.**

Last Name	First Name	Degree	Degree University	Code	Class & Title	Mo.	Tenure	Hire	Gender	Race	Citizenship
Hruda	Simone	Ph.D.	Massachusetts Institute of Tech.	99	9002 - Associate Professor		1	1994-07-08	Female	Black	U.S. Citizen
Kalu	Peter	Ph.D.	University of London	99	9001 - Professor		1	1994-07-01	Male	Black	Resident Alien
Moore	Carl	Ph.D.	Northwestern University	99	9002 - Associate Professor		1		Male	Black	U.S. Citizen

**Administrative Codes:**

- C1 - Chair
- C4 - Center Director
- G1 - Undergraduate Coordinator
- G2 - CAPS Deputy Director
- T1 - NHMFL Program Director
- 99 - No Administrative Duties

**Tenure Codes:**

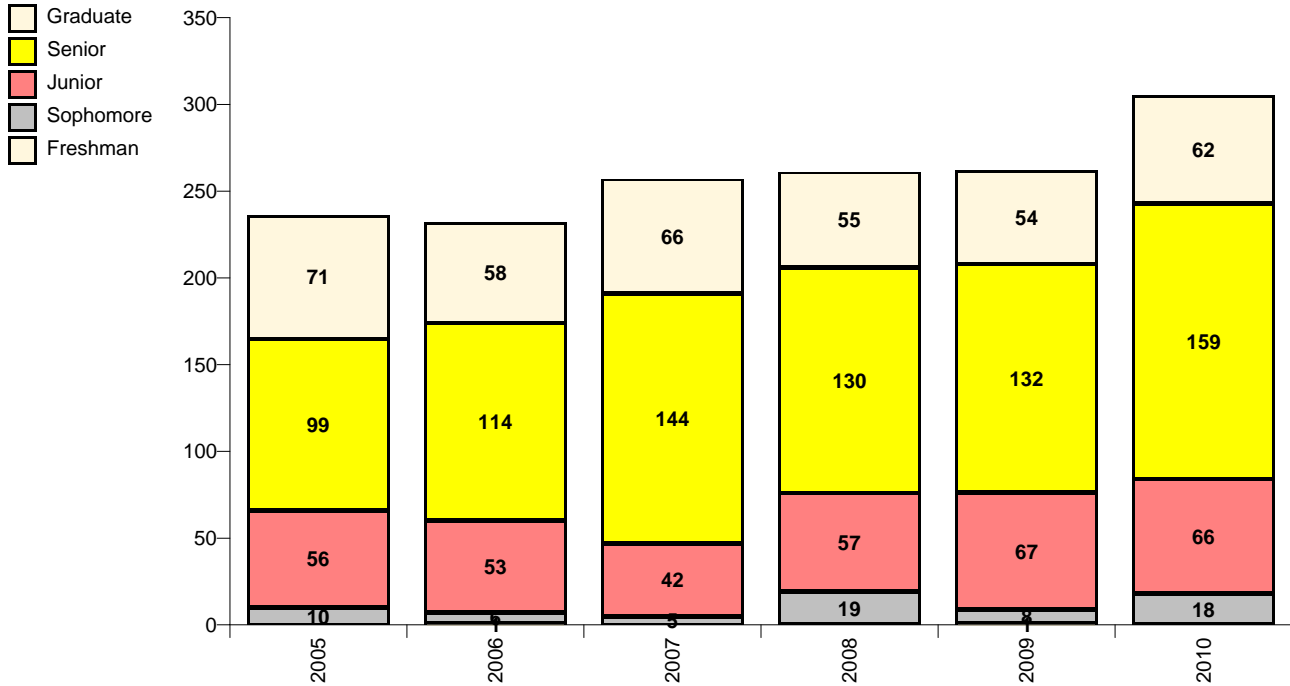
- 1 - Tenured
- 2 - Tenure-Earning
- 3 - Non-Tenured

*Last Updated on June 14, 2011*

**COLLEGE OF ENGINEERING  
MECHANICAL ENGINEERING  
HEADCOUNT ENROLLMENT BY FALL SEMESTER**

**Mechanical Engineering**

**554010**



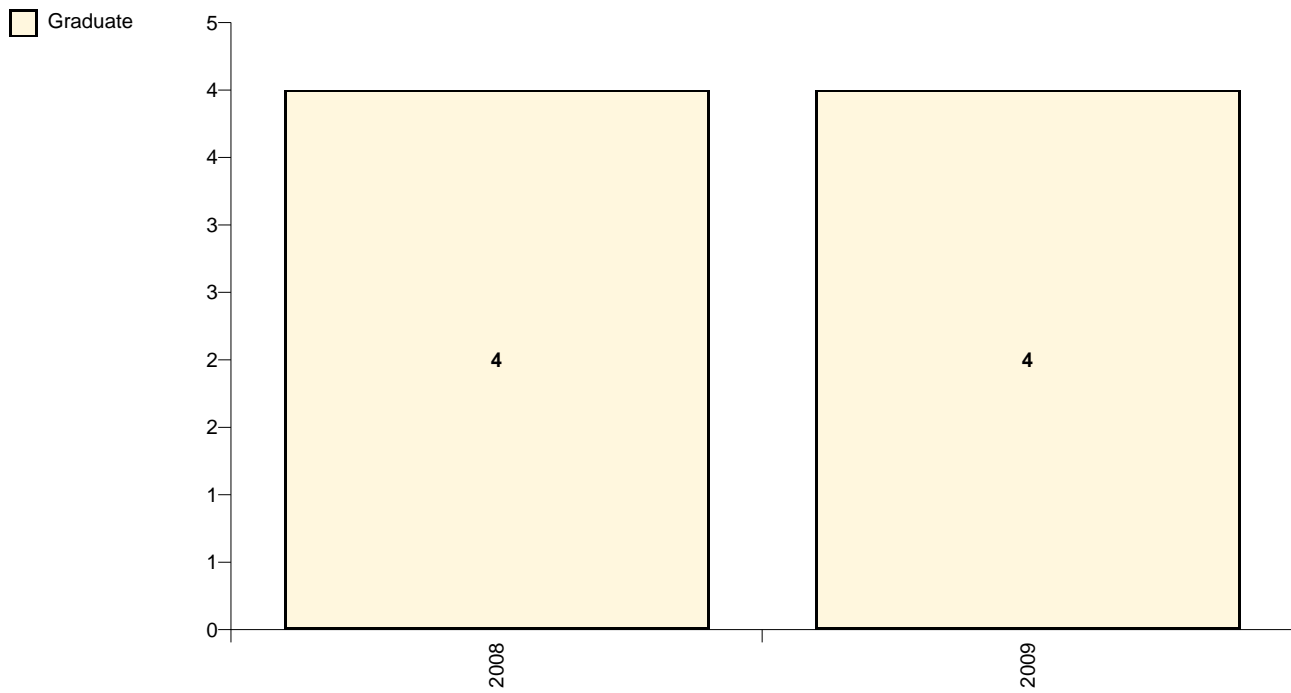
	2005	2006	2007	2008	2009	2010
Freshman		1			1	
Sophomore	10	6	5	19	8	18
Junior	56	53	42	57	67	66
Senior	99	114	144	130	132	159
Graduate - Masters	38	30	40	24	21	30
Graduate - Doctorate	33	28	26	31	33	32
<b>Total</b>	<b>236</b>	<b>232</b>	<b>257</b>	<b>261</b>	<b>262</b>	<b>305</b>

Source: Fall Preliminary Student Data Course Files

**COLLEGE OF ENGINEERING  
 MECHANICAL ENGINEERING  
 HEADCOUNT ENROLLMENT BY FALL SEMESTER**

**Sustainable Energy**

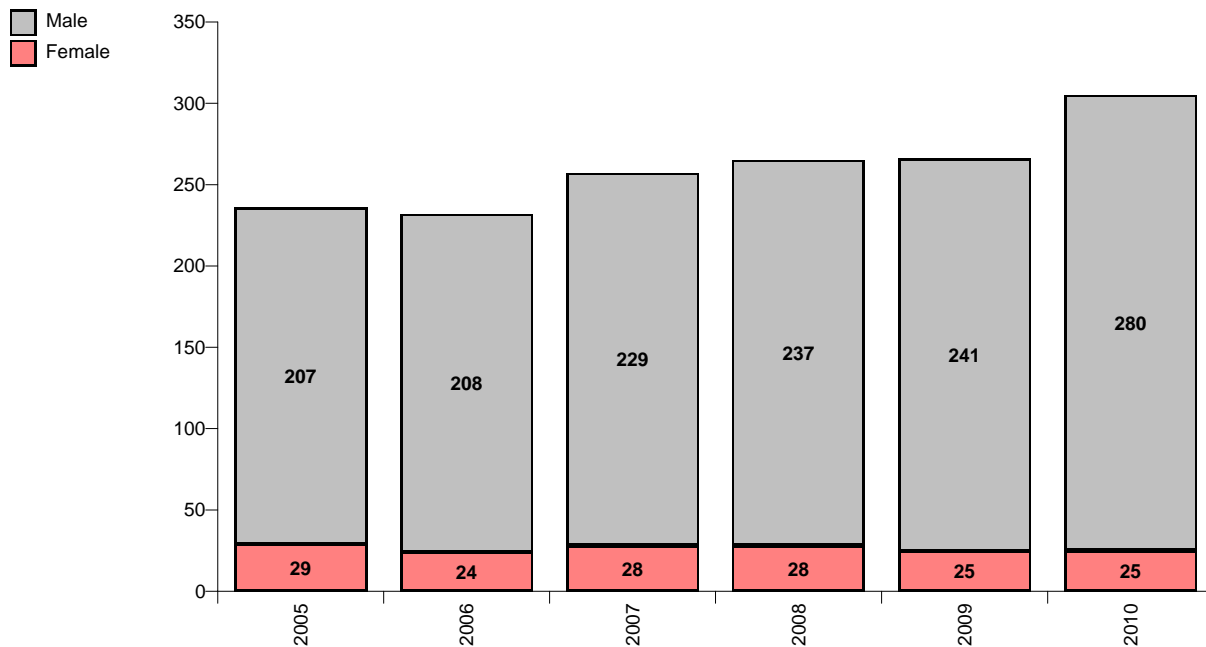
**554012**



	<b>2008</b>	<b>2009</b>
Graduate - Masters	4	4
<b>Total</b>	<b>4</b>	<b>4</b>

Source: Fall Preliminary Student Data Course Files

**College of Engineering  
Mechanical Engineering  
Enrollment by Fall Semester**

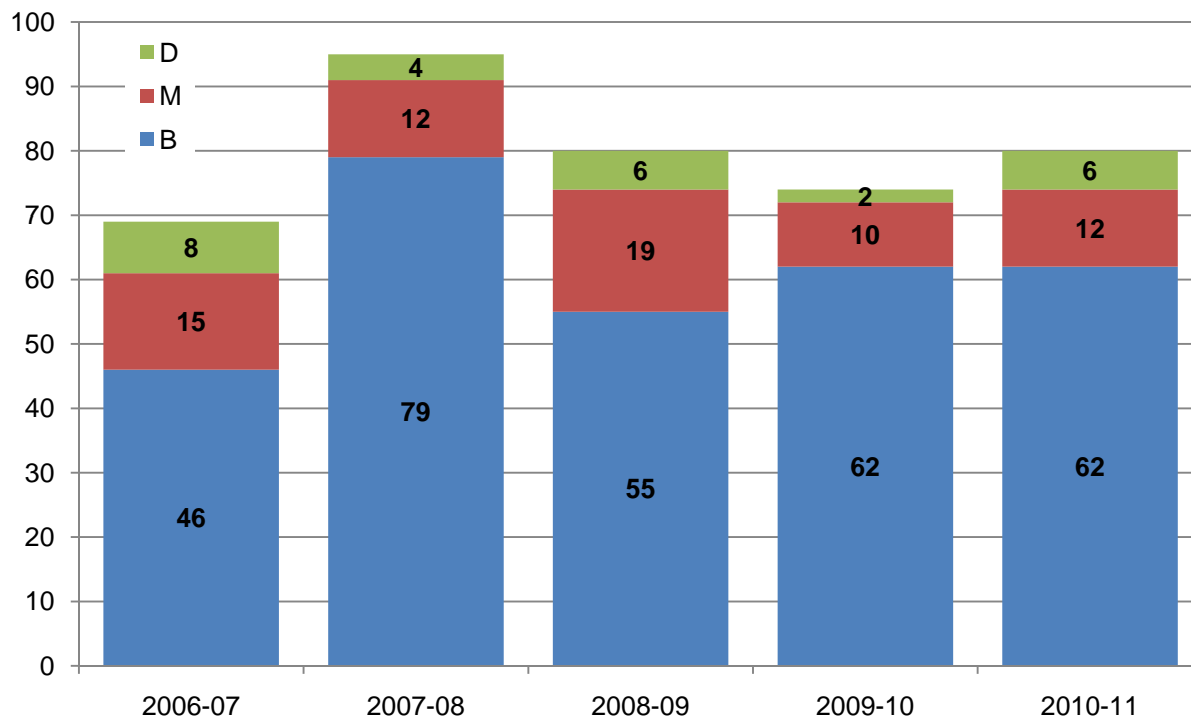


		2005	2006	2007	2008	2009	2010
<b>Female</b>	American Indian or Native Alaskan			1	1		
	Asian or Pacific Islander	2	2	2	1		
	Black	3	3	2	1		2
	Hispanic	2	2	4	5	6	6
	Non-Resident Alien	9	2	3	3	5	3
	White	13	15	16	17	14	14
	<b>Total</b>	<b>29</b>	<b>24</b>	<b>28</b>	<b>28</b>	<b>25</b>	<b>25</b>
<b>Male</b>	American Indian or Native Alaskan		1	1			
	Asian or Pacific Islander	5	6	5	10	11	9
	Black	17	8	9	8	12	13
	Hispanic	25	22	24	30	29	39
	Non-Resident Alien	31	27	27	25	25	21
	White	125	140	160	163	163	192
	Not Reported	4	4	3	1	1	6
<b>Total</b>	<b>207</b>	<b>208</b>	<b>229</b>	<b>237</b>	<b>241</b>	<b>280</b>	
<b>Department Total</b>		<b>236</b>	<b>232</b>	<b>257</b>	<b>265</b>	<b>266</b>	<b>305</b>

Source: Fall Preliminary Student Data Course Files

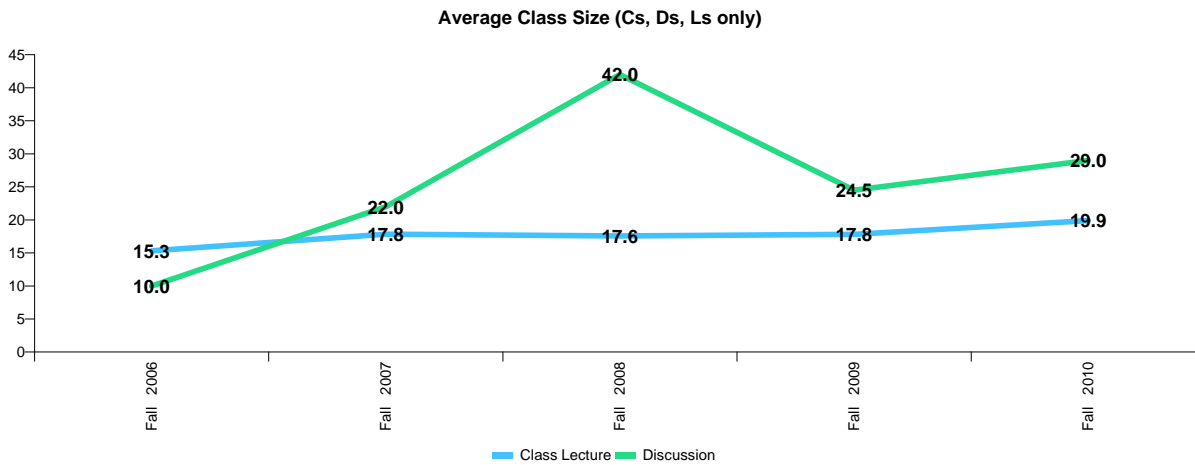


**COLLEGE OF ENGINEERING  
MECHANICAL ENGINEERING  
DEGREES AWARDED BY SEMESTER  
CIP Code: 141901**



		<b>Bachelors</b>	<b>Masters</b>	<b>Doctorate</b>	<b>Total</b>
2006-07	Summer '06	5	8	4	17
	Fall '06	2	3	2	7
	Spring '07	39	4	2	45
2006-07	<b>Total</b>	<b>46</b>	<b>15</b>	<b>8</b>	<b>69</b>
2007-08	Summer '07	2	0	2	4
	Fall '07	1	3	2	6
	Spring '08	76	9	0	85
2007-08	<b>Total</b>	<b>79</b>	<b>12</b>	<b>4</b>	<b>95</b>
2008-09	Summer '08	1	6	0	7
	Fall '08	3	6	2	11
	Spring '09	51	7	4	62
2008-09	<b>Total</b>	<b>55</b>	<b>19</b>	<b>6</b>	<b>80</b>
2009-10	Summer '09	4	2	1	7
	Fall '09	5	3	1	9
	Spring '10	53	5	0	58
2009-10	<b>Total</b>	<b>62</b>	<b>10</b>	<b>2</b>	<b>74</b>
2010-11	Summer '10	5	3	2	10
	Fall '10	5	3	3	11
	Spring '11	52	6	1	59
2010-11	<b>Total</b>	<b>62</b>	<b>12</b>	<b>6</b>	<b>80</b>

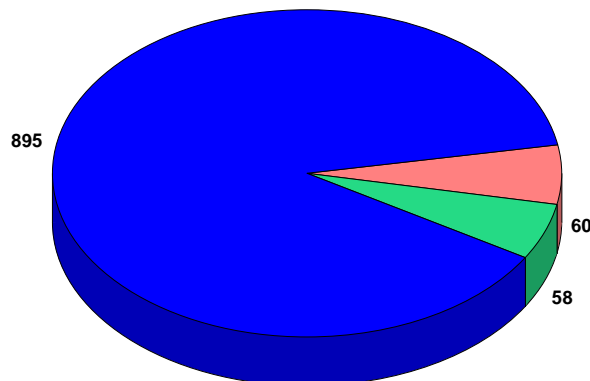
**COLLEGE OF ENGINEERING  
MECHANICAL ENGINEERING  
AVERAGE CLASS SIZE**



		Class Lecture			Discussion		
		Enrollment	Number of Sections	Class Size	Enrollment	Number of Sections	Class Size
Fall 2006	Upper	617	30	20.6			
	Graduate	103	17	6.1	20	2	10.0
	<b>Total</b>	<b>720</b>	<b>47</b>	<b>15.3</b>	<b>20</b>	<b>2</b>	<b>10.0</b>
Fall 2007	Upper	717	28	25.6			
	Graduate	103	18	5.7	22	1	22.0
	<b>Total</b>	<b>820</b>	<b>46</b>	<b>17.8</b>	<b>22</b>	<b>1</b>	<b>22.0</b>
Fall 2008	Upper	692	30	23.1			
	Graduate	81	14	5.8	42	1	42.0
	<b>Total</b>	<b>773</b>	<b>44</b>	<b>17.6</b>	<b>42</b>	<b>1</b>	<b>42.0</b>
Fall 2009	Upper	693	31	22.4			
	Graduate	73	12	6.1	49	2	24.5
	<b>Total</b>	<b>766</b>	<b>43</b>	<b>17.8</b>	<b>49</b>	<b>2</b>	<b>24.5</b>
Fall 2010	Upper	782	32	24.4			
	Graduate	113	13	8.7	58	2	29.0
	<b>Total</b>	<b>895</b>	<b>45</b>	<b>19.9</b>	<b>58</b>	<b>2</b>	<b>29.0</b>

■ Class Lecture  
■ Discussion  
■ All Others

**Fall 2010 Enrollment by Class Type**



**College of Engineering  
Mechanical Engineering  
Fundable Student Credit Hours and FTE**

**SCH Produced**

**Summer**

Level	2007	2008	2009	2010
Upper	454	428	369	492
Grad 1	24	101	72	67
Grad II	6	21	82	99
<b>Total</b>	<b>484</b>	<b>550</b>	<b>523</b>	<b>658</b>

**Fall**

Level	2007	2008	2009	2010
Upper	2,335	2,239	2,234	2,561
Grad 1	321	225	205	305
Grad II	237	277	283	316
<b>Total</b>	<b>2,893</b>	<b>2,741</b>	<b>2,722</b>	<b>3,182</b>

**Spring**

Level	2008	2009	2010	2011
Upper	2,700	2,576	2,663	2,773
Grad 1	321	216	175	263
Grad II	223	243	304	278
<b>Total</b>	<b>3,244</b>	<b>3,035</b>	<b>3,142</b>	<b>3,314</b>

**Fall & Spring**

Level	2007-08	2008-09	2009-10	2010-11
Upper	5,035	4,815	4,897	5,334
Grad 1	642	441	380	568
Grad II	460	520	587	594
<b>Total</b>	<b>6,137</b>	<b>5,776</b>	<b>5,864</b>	<b>6,496</b>

**Annual**

Level	2007-08	2008-09	2009-10	2010-11
Upper	5,489	5,243	5,266	5,826
Grad 1	666	542	452	635
Grad II	466	541	669	693
<b>Total</b>	<b>6,621</b>	<b>6,326</b>	<b>6,387</b>	<b>7,154</b>

**Annual FTE Contribution**

**Summer**

Level	2007	2008	2009	2010
Upper	11.4	10.7	9.2	12.3
Grad 1	0.8	3.2	2.3	2.1
Grad II	0.2	0.7	2.6	3.1
<b>Total</b>	<b>12.3</b>	<b>14.5</b>	<b>14.0</b>	<b>17.5</b>

**Fall**

Level	2007	2008	2009	2010
Upper	58.4	56.0	55.9	64.0
Grad 1	10.0	7.0	6.4	9.5
Grad II	7.4	8.7	8.8	9.9
<b>Total</b>	<b>75.8</b>	<b>71.7</b>	<b>71.1</b>	<b>83.4</b>

**Spring**

Level	2008	2009	2010	2011
Upper	67.5	64.4	66.6	69.3
Grad 1	10.0	6.8	5.5	8.2
Grad II	7.0	7.6	9.5	8.7
<b>Total</b>	<b>84.5</b>	<b>78.7</b>	<b>81.5</b>	<b>86.2</b>

**Fall & Spring**

Level	2007-08	2008-09	2009-10	2010-11
Upper	125.9	120.4	122.4	133.4
Grad 1	20.1	13.8	11.9	17.8
Grad II	14.4	16.3	18.3	18.6
<b>Total</b>	<b>160.3</b>	<b>150.4</b>	<b>152.6</b>	<b>169.7</b>

**Annual**

Level	2007-08	2008-09	2009-10	2010-11
Upper	137.2	131.1	131.7	145.7
Grad 1	20.8	16.9	14.1	19.8
Grad II	14.6	16.9	20.9	21.7
<b>Total</b>	<b>172.6</b>	<b>164.9</b>	<b>166.7</b>	<b>187.2</b>

Note: Lower and Upper hours are divided by 40 to obtain annual FTE; for Graduate I and Graduate II, hours are divided by 32

Source: Final Student Instruction Files (SIF)

**Distribution of Annual FTE by Semester Within Year**

	2007-08	2008-09	2009-10	2010-11
Summer	7.3%	8.7%	8.2%	9.2%
Fall	43.7%	43.3%	42.6%	44.5%
Spring	49.0%	48.0%	49.2%	46.3%
	<b>100.0%</b>	<b>100.0%</b>	<b>100.0%</b>	<b>100.0%</b>

**College of Engineering  
Mechanical Engineering  
Non-Fundable Student Credit Hours and FTE**

**SCH Produced**

**Summer**

Level	2007	2008	2009	2010
Upper	2	2	0	0
Grad 1	0	0	0	0
Grad II	0	0	0	0
<b>Total</b>	<b>2</b>	<b>2</b>	<b>0</b>	<b>0</b>

**Fall**

Level	2007	2008	2009	2010
Upper	0	10	10	3
Grad 1	3	3	3	9
Grad II	0	0	0	0
<b>Total</b>	<b>3</b>	<b>13</b>	<b>13</b>	<b>12</b>

**Spring**

Level	2008	2009	2010	2011
Upper	8	10	17	10
Grad 1	3	6	3	0
Grad II	0	0	0	0
<b>Total</b>	<b>11</b>	<b>16</b>	<b>20</b>	<b>10</b>

**Fall & Spring**

Level	2007-08	2008-09	2009-10	2010-11
Upper	8	20	27	13
Grad 1	6	9	6	9
Grad II	0	0	0	0
<b>Total</b>	<b>14</b>	<b>29</b>	<b>33</b>	<b>22</b>

**Annual**

Level	2007-08	2008-09	2009-10	2010-11
Upper	10	22	27	13
Grad 1	6	9	6	9
Grad II	0	0	0	0
<b>Total</b>	<b>16</b>	<b>31</b>	<b>33</b>	<b>22</b>

**Annual FTE Contribution**

**Summer**

Level	2007	2008	2009	2010
Upper	0.1	0.1	0.0	0.0
Grad 1	0.0	0.0	0.0	0.0
Grad II	0.0	0.0	0.0	0.0
<b>Total</b>	<b>0.1</b>	<b>0.1</b>	<b>0.0</b>	<b>0.0</b>

**Fall**

Level	2007	2008	2009	2010
Upper	0.0	0.3	0.3	0.1
Grad 1	0.1	0.1	0.1	0.3
Grad II	0.0	0.0	0.0	0.0
<b>Total</b>	<b>0.1</b>	<b>0.3</b>	<b>0.3</b>	<b>0.4</b>

**Spring**

Level	2008	2009	2010	2011
Upper	0.2	0.3	0.4	0.3
Grad 1	0.1	0.2	0.1	0.0
Grad II	0.0	0.0	0.0	0.0
<b>Total</b>	<b>0.3</b>	<b>0.4</b>	<b>0.5</b>	<b>0.3</b>

**Fall & Spring**

Level	2007-08	2008-09	2009-10	2010-11
Upper	0.2	0.5	0.7	0.3
Grad 1	0.2	0.3	0.2	0.3
Grad II	0.0	0.0	0.0	0.0
<b>Total</b>	<b>0.4</b>	<b>0.8</b>	<b>0.9</b>	<b>0.6</b>

**Annual**

Level	2007-08	2008-09	2009-10	2010-11
Upper	0.3	0.6	0.7	0.3
Grad 1	0.2	0.3	0.2	0.3
Grad II	0.0	0.0	0.0	0.0
<b>Total</b>	<b>0.4</b>	<b>0.8</b>	<b>0.9</b>	<b>0.6</b>

Note: Lower and Upper hours are divided by 40 to obtain annual FTE; for Graduate I and Graduate II, hours are divided by 32

Source: Final Student Instruction Files (SIF)

**Distribution of Annual FTE by Semester Within Year**

	2007-08	2008-09	2009-10	2010-11
Summer	12.5%	6.5%	0.0%	0.0%
Fall	18.8%	41.9%	39.4%	54.5%
Spring	68.8%	51.6%	60.6%	45.5%
<b>Total</b>	<b>100.0%</b>	<b>100.0%</b>	<b>100.0%</b>	<b>100.0%</b>

**College of Engineering  
Mechanical Engineering  
Total Student Credit Hours and FTE**

**SCH Produced**

**Summer**

Level	2007	2008	2009	2010
Upper	456	430	369	492
Grad 1	24	101	72	67
Grad II	6	21	82	99
<b>Total</b>	<b>486</b>	<b>552</b>	<b>523</b>	<b>658</b>

**Fall**

Level	2007	2008	2009	2010
Upper	2,335	2,249	2,244	2,564
Grad 1	324	228	208	314
Grad II	237	277	283	316
<b>Total</b>	<b>2,896</b>	<b>2,754</b>	<b>2,735</b>	<b>3,194</b>

**Spring**

Level	2008	2009	2010	2011
Upper	2,708	2,586	2,680	2,783
Grad 1	324	222	178	263
Grad II	223	243	304	278
<b>Total</b>	<b>3,255</b>	<b>3,051</b>	<b>3,162</b>	<b>3,324</b>

**Fall & Spring**

Level	2007-08	2008-09	2009-10	2010-11
Upper	5,043	4,835	4,924	5,347
Grad 1	648	450	386	577
Grad II	460	520	587	594
<b>Total</b>	<b>6,151</b>	<b>5,805</b>	<b>5,897</b>	<b>6,518</b>

**Annual**

Level	2007-08	2008-09	2009-10	2010-11
Upper	5,499	5,265	5,293	5,839
Grad 1	672	551	458	644
Grad II	466	541	669	693
<b>Total</b>	<b>6,637</b>	<b>6,357</b>	<b>6,420</b>	<b>7,176</b>

**Annual FTE Contribution**

**Summer**

Level	2007	2008	2009	2010
Upper	11.4	10.8	9.2	12.3
Grad 1	0.8	3.2	2.3	2.1
Grad II	0.2	0.7	2.6	3.1
<b>Total</b>	<b>12.3</b>	<b>14.6</b>	<b>14.0</b>	<b>17.5</b>

**Fall**

Level	2007	2008	2009	2010
Upper	58.4	56.2	56.1	64.1
Grad 1	10.1	7.1	6.5	9.8
Grad II	7.4	8.7	8.8	9.9
<b>Total</b>	<b>75.9</b>	<b>72.0</b>	<b>71.4</b>	<b>83.8</b>

**Spring**

Level	2008	2009	2010	2011
Upper	67.7	64.7	67.0	69.6
Grad 1	10.1	6.9	5.6	8.2
Grad II	7.0	7.6	9.5	8.7
<b>Total</b>	<b>84.8</b>	<b>79.2</b>	<b>82.1</b>	<b>86.5</b>

**Fall & Spring**

Level	2007-08	2008-09	2009-10	2010-11
Upper	126.1	120.9	123.1	133.7
Grad 1	20.3	14.1	12.1	18.0
Grad II	14.4	16.3	18.3	18.6
<b>Total</b>	<b>160.7</b>	<b>151.2</b>	<b>153.5</b>	<b>170.3</b>

**Annual**

Level	2007-08	2008-09	2009-10	2010-11
Upper	137.5	131.6	132.3	146.0
Grad 1	21.0	17.2	14.3	20.1
Grad II	14.6	16.9	20.9	21.7
<b>Total</b>	<b>173.0</b>	<b>165.8</b>	<b>167.5</b>	<b>187.8</b>

Note: Lower and Upper hours are divided by 40 to obtain annual FTE; for Graduate I and Graduate II, hours are divided by 32

Source: Final Student Instruction Files (SIF)

**Distribution of Annual FTE by Semester Within Year**

	2007-08	2008-09	2009-10	2010-11
Summer	7.3%	8.7%	8.1%	9.2%
Fall	43.6%	43.3%	42.6%	44.5%
Spring	49.0%	48.0%	49.3%	46.3%
<b>Total</b>	<b>100.0%</b>	<b>100.0%</b>	<b>100.0%</b>	<b>100.0%</b>

**Department of Mechanical Engineering  
All Student Credit Hours and Headcount Productivity  
By Instructor Type**

	Student					Student					
	FTE	Credit Hrs	SCH/FTE	Headcount	FTE	FTE	Credit Hrs	SCH/FTE	Headcount	FTE	
<u>Fall 2005</u>						<u>Spring 2006</u>					
Faculty	14.53	1216.0	83.7	396	27.3	Faculty	14.52	1747.0	120.3	511	35.2
OPS Regular Faculty	0.00	0.0	0.0	0	0.0	OPS Regular Faculty	0.25	27.0	108.0	9	36.0
OPS Faculty Adjuncts	1.70	370.0	217.6	116	68.2	OPS Faculty Adjuncts	0.75	190.0	253.3	51	68.0
Graduate Assistants	5.22	0.0	0.0	0	0.0	Graduate Assistants	5.27	0.0	0.0	0	0.0
A & P / USPS	0.00	0.0	0.0	0	0.0	A & P / USPS	0.00	0.0	0.0	0	0.0
Others	1.86	695.0	373.7	212	114.0	Others	3.11	690.0	221.9	230	74.0
	<b>23.31</b>	<b>2281.0</b>	<b>97.9</b>	<b>724</b>	<b>31.1</b>		<b>23.90</b>	<b>2654.0</b>	<b>111.0</b>	<b>801</b>	<b>33.5</b>
<u>Fall 2006</u>						<u>Spring 2007</u>					
Faculty	13.67	1,170.0	85.6	338	24.7	Faculty	13.05	2,092.0	160.3	589	45.1
OPS Regular Faculty	0.00	0.0	0.0	0	0.0	OPS Regular Faculty	0.00	0.0	0.0	0	0.0
OPS Faculty Adjuncts	1.35	334.0	247.4	94	69.6	OPS Faculty Adjuncts	0.61	63.0	103.3	21	34.4
Graduate Assistants	4.75	0.0	0.0	0	0.0	Graduate Assistants	5.82	0.0	0.0	0	0.0
A & P / USPS	0.00	0.0	0.0	0	0.0	A & P / USPS	0.00	0.0	0.0	0	0.0
Others	3.21	927.0	288.8	276	86.0	Others	2.82	710.0	251.8	214	75.9
	<b>22.98</b>	<b>2,431.0</b>	<b>105.8</b>	<b>708</b>	<b>30.8</b>		<b>22.30</b>	<b>2,865.0</b>	<b>128.5</b>	<b>824</b>	<b>36.9</b>
<u>Fall 2007</u>						<u>Spring 2008</u>					
Faculty	16.15	1,196.0	74.1	402	24.9	Faculty	17.54	2,084.0	118.8	646	36.8
OPS Regular Faculty	0.00	0.0	0.0	0	0.0	OPS Regular Faculty	0.00	0.0	0.0	0	0.0
OPS Faculty Adjuncts	1.28	620.0	484.4	171	133.6	OPS Faculty Adjuncts	0.91	555.0	609.9	147	161.5
Graduate Assistants	4.63	0.0	0.0	0	0.0	Graduate Assistants	5.15	0.0	0.0	0	0.0
A & P / USPS	0.00	0.0	0.0	0	0.0	A & P / USPS	0.00	0.0	0.0	0	0.0
Others	1.95	727.0	372.8	201	103.1	Others	2.19	520.0	237.4	146	66.7
	<b>24.01</b>	<b>2,543.0</b>	<b>105.9</b>	<b>774</b>	<b>32.2</b>		<b>25.79</b>	<b>3,159.0</b>	<b>122.5</b>	<b>939</b>	<b>36.4</b>
<u>Fall 2008</u>						<u>Spring 2009</u>					
Faculty	14.70	1,157.0	78.7	415.0	28.2	Faculty	14.28	1,845.0	129.2	616	43.1
OPS Regular Faculty	0.00	0.0	0.0	0.0	0.0	OPS Regular Faculty	0.00	0.0	0.0	0	0.0
OPS Faculty Adjuncts	1.92	598.0	310.8	163.0	84.7	OPS Faculty Adjuncts	1.20	428.0	355.5	107	88.9
Graduate Assistants	6.02	0.0	0.0	0.0	0.0	Graduate Assistants	5.21	0.0	0.0	0	0.0
A & P / USPS	0.00	0.0	0.0	0.0	0.0	A & P / USPS	0.91	0.0	0.0	0	0.0
Others	2.13	674.0	315.9	180.0	84.4	Others	3.50	582.0	166.1	176	50.2
	<b>24.79</b>	<b>2,429.0</b>	<b>98.0</b>	<b>758</b>	<b>30.6</b>		<b>25.11</b>	<b>2,855.0</b>	<b>113.7</b>	<b>899</b>	<b>35.8</b>
<u>Fall 2009</u>						<u>Spring 2010</u>					
Faculty	14.87	1,522.0	102.4	500.0	33.6	Faculty	16.00	2,078.0	129.9	659	41.2
OPS Regular Faculty	0.00	0.0	0.0	0.0	0.0	OPS Regular Faculty	0.00	0.0	0.0	0	0.0
OPS Faculty Adjuncts	0.89	216.0	243.3	72.0	81.1	OPS Faculty Adjuncts	1.65	444.0	269.1	148	89.7
Graduate Assistants	2.77	0.0	0.0	0.0	0.0	Graduate Assistants	4.43	0.0	0.0	0	0.0
A & P / USPS	0.00	0.0	0.0	0.0	0.0	A & P / USPS	0.00	0.0	0.0	0	0.0
Others	1.00	684.0	684.1	185.0	185.0	Others	2.43	600.0	247.1	183	75.4
	<b>19.53</b>	<b>2,422.0</b>	<b>124.0</b>	<b>757</b>	<b>38.8</b>		<b>24.51</b>	<b>3,122.0</b>	<b>127.4</b>	<b>990</b>	<b>40.4</b>

## Mechanical Engineering - Faculty Courses & Hours

Fall 2005- Spring 2006				Organized Classes (C,D,L)									
Faculty Member	Class	Pay	FTE	SCH		Total	Headcount		Total	Sections		Total	
				UGrad	Grad	SCH	UGrad	Grad	HC	UGrad	Grad	#Sec.	
ALVI	9002	22	2.00	135.0	39.0	174.0	45.0	8.0	53.0	4.0	2.0	6.0	
CARTES	9003	22	2.00	229.0	12.0	241.0	60.0	4.0	64.0	2.0	1.0	3.0	
CHANDRA	9001	22	2.00	-	33.0	33.0	-	11.0	11.0	-	3.0	3.0	
COLLINS	9001	22	2.00	235.0	15.0	250.0	60.0	5.0	65.0	2.0	2.0	4.0	
EL-AZAB	9002	22	1.02	-	96.0	96.0	-	30.0	30.0	-	3.0	3.0	
GIELISSE	9001	22	2.00	324.0	39.0	363.0	92.0	12.0	104.0	4.0	2.0	6.0	
GRESKA	9162	22	1.00	-	-	-	-	-	-	-	-	-	
HOLLIS	9002	22	2.00	327.0	12.0	339.0	93.0	4.0	97.0	3.0	1.0	4.0	
KALU	9002	22	1.98	39.0	78.0	117.0	13.0	25.0	38.0	2.0	6.0	8.0	
LOURENCO	9001	22	2.00	3.0	9.0	12.0	1.0	3.0	4.0	1.0	2.0	3.0	
LOUNGO	9001	22	0.85	312.0	-	312.0	104.0	-	104.0	2.0	-	2.0	
ORDONEZ	9003	22	2.00	380.0	-	380.0	95.0	64.0	159.0	2.0	2.0	4.0	
SHIH	9001	22	2.00	235.0	18.0	253.0	61.0	6.0	67.0	2.0	1.0	3.0	
VAN DOMMELEN	9001	22	2.00	92.0	54.0	146.0	46.0	17.0	63.0	1.0	4.0	5.0	
BUZYNA	9001	06	0.70	390.0	-	390.0	98.0	-	98.0	2.0	-	2.0	
EL-AASSAR	9001	06	0.50	106.0	-	106.0	44.0	-	44.0	4.0	-	4.0	
RISH III	9001	06	0.50	22.0	-	22.0	11.0	-	11.0	1.0	-	1.0	
VAGHAR	9003	06	0.40	42.0	-	42.0	14.0	-	14.0	1.0	-	1.0	
AWONIYI	9001	98	1.00	72.0	90.0	162.0	24.0	28.0	52.0	1.0	3.0	4.0	
BOOESHAGHI	9003	98	0.25	156.0	-	156.0	52.0	-	52.0	1.0	-	1.0	
HAIK	9002	98	0.16	-	-	-	-	-	-	-	-	-	
HRUDA	9002	98	1.33	672.0	-	672.0	227.0	-	227.0	10.0	-	10.0	
MOORE	9003	98	1.13	242.0	21.0	263.0	65.0	7.0	72.0	3.0	2.0	5.0	
WU	9003	98	0.12	9.0	24.0	33.0	3.0	8.0	11.0	1.0	1.0	2.0	
<b>TOTALS</b>				<b>4,022.0</b>	<b>540.0</b>	<b>4,562.0</b>	<b>1,208.0</b>	<b>232.0</b>	<b>1,440.0</b>	<b>49.0</b>	<b>35.0</b>	<b>84.0</b>	
<b>AVERAGE PER FACULTY</b>				<b>201.1</b>	<b>38.6</b>	<b>207.4</b>	<b>60.4</b>	<b>15.5</b>	<b>65.5</b>	<b>2.5</b>	<b>2.3</b>	<b>3.8</b>	

## Mechanical Engineering - Faculty Courses & Hours

Fall 2005- Spring 2006				Individualized (G,T,I,O,P,R,S,Z)								
Faculty Member	Class	Pay	FTE	SCH		Total	Headcount		Total	Sections		Total
				UGrad	Grad	SCH	UGrad	Grad	HC	UGrad	Grad	#Sec.
ALVI	9002	22	2.00	-	56.0	56.0	-	12.0	12.0	-	12.0	12.0
CARTES	9003	22	2.00	6.0	60.0	66.0	2.0	8.0	10.0	2.0	8.0	10.0
CHANDRA	9001	22	2.00	-	38.0	38.0	-	7.0	7.0	-	7.0	7.0
COLLINS	9001	22	2.00	-	37.0	37.0	-	7.0	7.0	-	7.0	7.0
EL-AZAB	9002	22	1.02	-	24.0	24.0	-	6.0	6.0	-	6.0	6.0
GIELISSE	9001	22	2.00	-	-	-	-	-	-	-	-	-
GRESKA	9162	22	1.00	-	3.0	3.0	-	1.0	1.0	-	1.0	1.0
HOLLIS	9002	22	2.00	-	8.0	8.0	-	5.0	5.0	-	5.0	5.0
KALU	9002	22	1.98	3.0	32.0	35.0	1.0	8.0	9.0	1.0	8.0	9.0
LOURENCO	9001	22	2.00	-	2.0	2.0	-	2.0	2.0	-	2.0	2.0
LOUNGO	9001	22	0.85	-	20.0	20.0	-	5.0	5.0	-	5.0	5.0
ORDONEZ	9003	22	2.00	1.0	30.0	31.0	1.0	8.0	9.0	1.0	8.0	9.0
SHIH	9001	22	2.00	-	18.0	18.0	-	2.0	2.0	-	2.0	2.0
VAN DOMMELEN	9001	22	2.00	-	6.0	6.0	-	2.0	2.0	-	2.0	2.0
BUZYNA	9001	22	0.70	-	-	-	-	-	-	-	-	-
EL-AASSAR	9001	06	0.50	-	-	-	-	-	-	-	-	-
RISH III	9001	06	0.50	-	-	-	-	-	-	-	-	-
VAGHAR	9003	06	0.40	-	-	-	-	-	-	-	-	-
AWONIYI	9001	98	1.00	-	-	-	-	-	-	-	-	-
BOOESHAGHI	9003	98	0.25	-	-	-	-	-	-	-	-	-
HAIK	9002	98	0.16	-	4.0	4.0	-	2.0	2.0	-	2.0	2.0
HRUDA	9002	98	1.33	-	-	-	-	-	-	-	-	-
MOORE	9003	98	1.13	3.0	19.0	22.0	1.0	4.0	5.0	1.0	4.0	5.0
WU	9003	98	0.12	-	3.0	3.0	-	1.0	1.0	-	1.0	1.0
<b>TOTALS</b>				<b>13.0</b>	<b>360.0</b>	<b>373.0</b>	<b>5.0</b>	<b>80.0</b>	<b>85.0</b>	<b>5.0</b>	<b>80.0</b>	<b>85.0</b>
<b>AVERAGE PER FACULTY</b>				<b>3.3</b>	<b>22.5</b>	<b>23.3</b>	<b>1.3</b>	<b>5.0</b>	<b>5.3</b>	<b>1.3</b>	<b>5.0</b>	<b>5.3</b>

## Mechanical Engineering - Faculty Courses & Hours

Fall 2005- Spring 2006				All Types								
Faculty Member	Class	Pay	FTE	SCH		TOTAL	Headcount		TOTAL	Sections		TOTAL
				UGrad	Grad	SCH	UGrad	Grad	HC	UGrad	Grad	#Sec.
ALVI	9002	22	2.00	135.0	95.0	230.0	45.0	20.0	65.0	4.0	14.0	18.0
CARTES	9003	22	2.00	235.0	72.0	307.0	62.0	12.0	74.0	4.0	9.0	13.0
CHANDRA	9001	22	2.00	-	71.0	71.0	-	18.0	18.0	-	10.0	10.0
COLLINS	9001	22	2.00	235.0	52.0	287.0	60.0	12.0	72.0	2.0	9.0	11.0
EL-AZAB	9002	22	1.02	-	120.0	120.0	-	36.0	36.0	-	9.0	9.0
GIELISSE	9001	22	2.00	324.0	39.0	363.0	92.0	12.0	104.0	4.0	2.0	6.0
GRESKA	9162	22	1.00	-	3.0	3.0	-	1.0	1.0	-	1.0	1.0
HOLLIS	9002	22	2.00	327.0	20.0	347.0	93.0	9.0	102.0	3.0	6.0	9.0
KALU	9002	22	1.98	42.0	110.0	152.0	14.0	33.0	47.0	3.0	14.0	17.0
LOURENCO	9001	22	2.00	3.0	11.0	14.0	1.0	5.0	6.0	1.0	4.0	5.0
LOUNGO	9001	22	0.85	312.0	20.0	332.0	104.0	5.0	109.0	2.0	5.0	7.0
ORDONEZ	9003	22	2.00	381.0	30.0	411.0	96.0	72.0	168.0	3.0	10.0	13.0
SHIH	9001	22	2.00	235.0	36.0	271.0	61.0	8.0	69.0	2.0	3.0	5.0
VAN DOMMELEN	9001	22	2.00	92.0	60.0	152.0	46.0	19.0	65.0	1.0	6.0	7.0
BUZYNA	9001	22	0.70	390.0	-	390.0	98.0	-	98.0	2.0	-	2.0
EL-AASSAR	9001	06	0.50	106.0	-	106.0	44.0	-	44.0	4.0	-	4.0
RISH III	9001	06	0.50	22.0	-	22.0	11.0	-	11.0	1.0	-	1.0
VAGHAR	9003	98	0.40	42.0	-	42.0	14.0	-	14.0	1.0	-	1.0
AWONIYI	9001	98	1.00	72.0	90.0	162.0	24.0	28.0	52.0	1.0	3.0	4.0
BOOESHAGHI	9003	98	0.25	156.0	-	156.0	52.0	-	52.0	1.0	-	1.0
HAIK	9002	98	0.16	-	4.0	4.0	-	2.0	2.0	-	2.0	2.0
HRUDA	9002	98	1.33	672.0	-	672.0	227.0	-	227.0	10.0	-	10.0
MOORE	9003	98	1.13	245.0	40.0	285.0	66.0	11.0	77.0	4.0	6.0	10.0
WU	9003	98	0.12	9.0	27.0	36.0	3.0	9.0	12.0	1.0	2.0	3.0
<b>TOTALS</b>				<b>4,035.0</b>	<b>900.0</b>	<b>4,935.0</b>	<b>1,213.0</b>	<b>312.0</b>	<b>1,525.0</b>	<b>54.0</b>	<b>115.0</b>	<b>169.0</b>
<b>AVERAGE PER FACULTY</b>				<b>201.8</b>	<b>50.0</b>	<b>205.6</b>	<b>60.7</b>	<b>17.3</b>	<b>63.5</b>	<b>2.7</b>	<b>6.4</b>	<b>7.0</b>



## Mechanical Engineering - Faculty Courses & Hours

Fall 2009- Spring 2010				Organized Classes (C,D,L)								
Faculty Member	Class	Pay	FTE	SCH		Total	Headcount		Total	Sections		Total
				UGrad	Grad	SCH	UGrad	Grad	HC	UGrad	Grad	#Sec.
ALVI	9001	22	1.99	243.0	18.0	261.0	81.0	6.0	87.0	5.0	1.0	6.0
CARTES	9002	22	1.99	123.0	-	123.0	69.0	-	69.0	7.0	-	7.0
CLARK	9003	22	1.99	252.0	15.0	267.0	84.0	25.0	109.0	4.0	2.5	6.5
COLLINS	9001	22	1.99	66.0	33.0	99.0	22.0	11.0	33.0	2.0	2.0	4.0
ENGLANDER	9003	22	1.99	272.0	33.0	305.0	71.0	89.0	160.0	2.0	4.5	6.5
HELLSTROM	9001	22	1.99	185.0	-	185.0	63.0	-	63.0	3.0	-	3.0
HOLLIS	9002	22	1.99	365.0	3.0	368.0	100.0	1.0	101.0	5.0	1.0	6.0
KROTHAPALLI	9009	22	1.99	21.0	21.0	42.0	7.0	7.0	14.0	1.0	2.0	3.0
LARSON	9121	22	1.00	228.0	-	228.0	57.0	-	57.0	1.0	-	1.0
LOURENCO	9001	22	1.99	-	30.0	30.0	-	10.0	10.0	-	2.0	2.0
OATES	9003	22	1.99	60.0	45.0	105.0	20.0	15.0	35.0	1.0	2.0	3.0
ORDONEZ	9002	22	1.99	472.0	-	472.0	118.0	-	118.0	3.0	-	3.0
SHIH	9001	22	1.99	156.0	30.0	186.0	52.0	8.0	60.0	2.0	3.0	5.0
VAN DOMMELEN	9001	22	1.99	250.0	105.0	355.0	89.0	35.0	124.0	2.0	3.0	5.0
VAN SCIVER	9001	22	1.00	54.0	21.0	75.0	18.0	7.0	25.0	1.0	1.0	2.0
KAMETANI	9003	06	0.30	27.0	21.0	48.0	9.0	7.0	16.0	1.0	1.0	2.0
WARYOBA	9003	06	0.94	603.0	9.0	612.0	201.0	3.0	204.0	5.0	1.0	6.0
HRUDA	9002	98	1.30	721.0	-	721.0	228.0	-	228.0	12.0	-	12.0
KALU	9002	98	0.25	-	-	-	-	-	-	-	-	-
MOORE	9003	98	0.96	515.0	18.0	533.0	129.0	6.0	135.0	5.0	1.0	6.0
<b>TOTALS</b>				<b>4,613.0</b>	<b>402.0</b>	<b>5,015.0</b>	<b>1,418.0</b>	<b>230.0</b>	<b>1,648.0</b>	<b>62.0</b>	<b>27.0</b>	<b>89.0</b>
<b>AVERAGE PER FACULTY</b>				<b>256.3</b>	<b>28.7</b>	<b>263.9</b>	<b>78.8</b>	<b>16.4</b>	<b>86.7</b>	<b>3.4</b>	<b>1.9</b>	<b>4.7</b>

## Mechanical Engineering - Faculty Courses & Hours

Fall 2009- Spring 2010				Individualized (G,T,I,O,P,R,S,Z)								
Faculty Member	Class	Pay	FTE	SCH		Total	Headcount		Total	Sections		Total
				UGrad	Grad	SCH	UGrad	Grad	HC	UGrad	Grad	#Sec.
ALVI	9001	22	1.99	-	64.0	64.0	-	14.0	14.0	-	14.0	14.0
CARTES	9002	22	1.99	-	21.0	21.0	-	4.0	4.0	-	4.0	4.0
CLARK	9003	22	1.99	9.0	39.0	48.0	3.0	8.0	11.0	3.0	8.0	11.0
COLLINS	9001	22	1.99	-	90.0	90.0	-	12.0	12.0	-	12.0	12.0
ENGLANDER	9003	22	1.99	3.0	18.0	21.0	1.0	4.0	5.0	1.0	4.0	5.0
HELLSTROM	9001	22	1.99	-	15.0	15.0	-	2.0	2.0	-	2.0	2.0
HOLLIS	9002	22	1.99	-	-	-	-	-	-	-	-	-
KROTHAPALLI	9009	22	1.99	-	48.0	48.0	-	12.0	12.0	-	12.0	12.0
LARSON	9121	22	1.00	-	-	-	-	-	-	-	-	-
LOURENCO	9001	22	1.99	-	-	-	-	-	-	-	-	-
OATES	9003	22	1.99	-	50.0	50.0	-	10.0	10.0	-	10.0	10.0
ORDONEZ	9002	22	1.99	3.0	93.0	96.0	1.0	14.0	15.0	1.0	14.0	15.0
SHIH	9001	22	1.99	-	15.0	15.0	-	3.0	3.0	-	3.0	3.0
VAN DOMMELEN	9001	22	1.99	-	6.0	6.0	-	2.0	2.0	-	2.0	2.0
VAM SCIVER	9001	22	1.00	-	25.0	25.0	-	4.0	4.0	-	4.0	4.0
KAMETANI	9003	06	0.30	-	-	-	-	-	-	-	-	-
WARYOBA	9003	06	0.94	-	-	-	-	-	-	-	-	-
HRUDA	9002	98	1.30	-	-	-	-	-	-	-	-	-
KALU	9002	98	0.25	-	27.0	27.0	-	4.0	4.0	-	4.0	4.0
MOORE	9003	98	0.96	-	3.0	3.0	-	1.0	1.0	-	1.0	1.0
<b>TOTALS</b>				<b>15.0</b>	<b>514.0</b>	<b>529.0</b>	<b>5.0</b>	<b>94.0</b>	<b>99.0</b>	<b>5.0</b>	<b>94.0</b>	<b>99.0</b>
<b>AVERAGE PER FACULTY</b>				<b>5.0</b>	<b>36.7</b>	<b>37.8</b>	<b>1.7</b>	<b>6.7</b>	<b>7.1</b>	<b>1.7</b>	<b>6.7</b>	<b>7.1</b>

## Mechanical Engineering - Faculty Courses & Hours

Fall 2009- Spring 2010				All Types									
Faculty Member	Class	Pay	FTE	SCH		TOTAL	Headcount		TOTAL	Sections		TOTAL	
				UGrad	Grad	SCH	UGrad	Grad	HC	UGrad	Grad	#Sec.	
ALVI	9001	22	1.99	243.0	82.0	325.0	81.0	20.0	101.0	5.0	15.0	20.0	
CARTES	9002	22	1.99	123.0	21.0	144.0	69.0	4.0	73.0	7.0	4.0	11.0	
CLARK	9003	22	1.99	261.0	54.0	315.0	87.0	33.0	120.0	7.0	10.5	17.5	
COLLINS	9001	22	1.99	66.0	123.0	189.0	22.0	23.0	45.0	2.0	14.0	16.0	
ENGLANDER	9003	22	1.99	275.0	51.0	326.0	72.0	93.0	165.0	3.0	8.5	11.5	
HELLSTROM	9001	22	1.99	185.0	15.0	200.0	63.0	2.0	65.0	3.0	2.0	5.0	
HOLLIS	9002	22	1.99	365.0	3.0	368.0	100.0	1.0	101.0	5.0	1.0	6.0	
KROTHAPALLI	9009	22	1.99	21.0	69.0	90.0	7.0	19.0	26.0	1.0	14.0	15.0	
LARSON	9121	22	1.00	228.0	-	228.0	57.0	-	57.0	1.0	-	1.0	
LOURENCO	9001	22	1.99	-	30.0	30.0	-	10.0	10.0	-	2.0	2.0	
OATES	9003	22	1.99	60.0	95.0	155.0	20.0	25.0	45.0	1.0	12.0	13.0	
ORDONEZ	9002	22	1.99	475.0	93.0	568.0	119.0	14.0	133.0	4.0	14.0	18.0	
SHIH	9001	22	1.99	156.0	45.0	201.0	52.0	11.0	63.0	2.0	6.0	8.0	
VAN DOMMELEN	9001	22	1.99	250.0	111.0	361.0	89.0	37.0	126.0	2.0	5.0	7.0	
VAM SCIVER	9001	22	1.00	54.0	46.0	100.0	18.0	11.0	29.0	1.0	5.0	6.0	
KAMETANI	9003	06	0.30	27.0	21.0	48.0	9.0	7.0	16.0	1.0	1.0	2.0	
WARYOBA	9003	06	0.94	603.0	9.0	612.0	201.0	3.0	204.0	5.0	1.0	6.0	
HRUDA	9002	98	1.30	721.0	-	721.0	228.0	-	228.0	12.0	-	12.0	
KALU	9002	98	0.25	-	27.0	27.0	-	4.0	4.0	-	4.0	4.0	
MOORE	9003	98	0.96	515.0	21.0	536.0	129.0	7.0	136.0	5.0	2.0	7.0	
TOTALS				4,628.0	916.0	5,544.0	1,423.0	324.0	1,747.0	67.0	121.0	188.0	
AVERAGE PER FACULTY				257.1	50.9	277.2	79.1	18.0	87.4	3.7	6.7	9.4	

**Operating Budget E&G Position FTE and Rate Totals  
By Pay Plan, Month Type, Filled/Vacant, and Rank**

**College of Engineering**

**Mechanical Engineering**

		2006-07	2007-08	2008-09	2009-10	2010-11
<b>Total All Pay Plans</b>	<b>FTE</b>	4.53	7.44	6.54	8.04	10.04
	<b>Person Years</b>	3.38	4.98	4.89	6.01	7.50
	<b>Current Rate</b>	\$387,904	\$627,012	\$617,489	\$779,485	\$1,066,728
<b>Filled 9- &amp; 12-Month Faculty</b>	<b>FTE</b>	4.53	5.54	6.54	6.54	7.12
	<b>Person Years</b>	3.38	4.14	4.89	4.89	5.32
	<b>Current Rate</b>	\$387,904	\$499,039	\$617,489	\$657,440	\$760,223
<b>Vacant &amp; Reserve Faculty</b>	<b>FTE</b>		1.00		1.50	2.92
	<b>Person Years</b>		0.75		1.12	2.18
	<b>Current Rate</b>		\$118,450		\$122,045	\$306,505
<b>Summer Faculty</b>	<b>FTE</b>		0.90			
	<b>Person Years</b>		0.09			
	<b>Current Rate</b>		\$9,523			

Source: Office of Institutional Research

## E & G Expenditures by Budget Category, By Major Object code, Departments within School

### College of Engineering

#### *Mechanical Engineering*

<b>Category Code</b>	<b>Object Code</b>	<b>2005-06</b>	<b>2006-07</b>	<b>2007-08</b>	<b>2008-09</b>	<b>2009-10</b>
SALARY	FACULTY	\$1,366,839	\$406,397	\$654,678	\$651,329	\$645,450
	USPS	\$29,838				
	FRINGE BENEFITS	\$345,957	\$100,246	\$159,043	\$151,766	\$145,918
	OTHER SALARY	\$500				
	<b>SALARY</b>		<b>\$1,743,134</b>	<b>\$506,643</b>	<b>\$813,721</b>	<b>\$803,095</b>
EXPENSE	BEDDING & TEXTILES				\$38	
	CONSTRUCTION SUPPLIES			\$1	\$263	\$147
	CONSULTING & OTHER					\$2,000
	EDUCATIONAL SUPPLIES				\$312	
	EQUIPMENT & BOOKS			\$5,173	\$5,583	\$959
	EXPENSE OTHER			\$87		
	MAINT & HEATING SUPPLIES				\$120	\$20
	OFFICE SUPPLIES			\$359	\$2,747	\$1,437
	OTHER MATERIALS & SUPPLIES			\$50	\$380	\$4,691
	PRINTING			\$51	\$69	\$85
	REPAIRS & MAINTENANCE			\$1,055	\$338	\$590
	TELEPHONE			\$345	\$24	
	TRAVEL	\$599			\$863	
	FREIGHT				\$217	\$6
<b>EXPENSE</b>		<b>\$599</b>		<b>\$7,121</b>	<b>\$10,954</b>	<b>\$9,935</b>
OPS	FRINGE BENEFITS	\$7,951	\$76	\$2		
	FACULTY ADJUNCTS	\$51,217	\$5,232			
	GRAD ASST	\$140,724		\$6,299	\$4,496	
	OPS OTHER	\$82,046				
	STUDENT ASST	\$43,325				
<b>OPS</b>		<b>\$325,263</b>	<b>\$5,308</b>	<b>\$6,301</b>	<b>\$4,496</b>	
OCO	DATA PROCESSING EQUIPMENT				\$999	
	EDUCATIONAL EQUIPMENT				\$14,000	
<b>OCO</b>				<b>\$14,999</b>		
	<b>Department Total:</b>	<b>\$2,068,996</b>	<b>\$511,951</b>	<b>\$827,143</b>	<b>\$833,544</b>	<b>\$801,303</b>

**Program : Mechanical engineering**

Number of students who entered the program between 1999 and 2009					Record the number who within the various time spans listed below completed degree within given number of years after enrolling								
	Number of entering doctoral students	Number of students who left the program without a master's or doctoral degree	Number of students who left the program after receiving a master's degree or specialist	Number of students admitted to doctoral candidacy	3 years or less	4 years	5 years	6 years	7 years	8 years	9 years	10 years or more	Number still enrolled after 10 years
1999-2000	11		2	9			3	5	1				
2000-2001	6	1		6			3	1	1				
2001-2002	8	1	2	6			1	3	1				
2002-2003	6	1		5			4			1			
2003-2004	9	1	1	8			3	3	1				
2004-2005	8	2	1	5			2	1	2				
2005-2006	6	1	1	4				1					
2006-2007	8		1	7			4						
2007-2008	4			3									
2008-2009	6			2									
2009-2010	9			2									

**Quality Enhancement Review  
Unit Accomplishment Summary  
Teaching and Research Overview  
2009-2010**

**Name of Program:  
Mechanical Engineering**

Faculty member	Instructional assignment (%)	Number of organized courses taught (C,D,L)	Number of individualized courses (G,T,I,O,P,R,S,Z)	Instructional contact hours	Number of directed individual studies (DIS)	Number of PhD students supervised	Research assignment (%)	NRC-countable publications and/or creative products	ALL SOURCES			
									Number of proposals submitted	Number of proposals funded	Total grant funds awarded	Number of honors and awards
ALVI		6.0	14.0	18.6								
CARIES		7.0	4.0	7.0								
CLARK		6.5	11.0	19.8								
COLLINS		4.0	12.0	16.5								
ENGLANDER		6.5	5.0	11.8								
HELLSTROM		3.0	2.0	9.0								
HOLLIS		6.0	0.0	13.0								
KROTHAPALLI		3.0	12.0	14.0								
LARSON		1.0	0.0	4.0								
LOURENCO		2.0	0.0	6.0								
OATES		3.0	10.0	11.0								
ORDONEZ		3.0	15.0	20.5								
SHIH		5.0	3.0	16.0								
VAN DOMMELEN		5.0	2.0	13.0								
VAN SCIVER		2.0	4.0	6.0								
KAMETANI		2.0	0.0	3.0								
WARYOBA		6.0	0.0	15.0								
KRUDA		12.0	0.0	15.6								
KALU		0.0	4.0	3.0								
MOORE		6.0	1.0	11.5								
<b>SUM</b>		89.0	99.0	234.2								
<b>MEAN</b>		4.5	5.0	11.7								
<b>MEDIAN</b>		4.5	3.5	12.4								

**Quality Enhancement Review  
Unit Accomplishment Summary  
Instructional Activities  
2009-2010**

Name of Program: Mechanical Engineering

Faculty member	Instructional assignment (%)	Number of organized courses taught (C,D,L)	Total enrollment	Number of individualized courses (G,T,I,O,P,R,S,Z)	Total enrollment	Total instructional contact hours	Total student credit hours	Number of honors courses	Number of thesis/dissertation student committees
ALVI		6.0	87.0	14.0	14	18.6	325.0		
CARIES		7.0	69.0	4.0	4	7.0	144.0		
CLARK		6.5	109.0	11.0	11	19.8	315.0		
COLLINS		4.0	33.0	12.0	12	16.5	189.0		
ENGLANDER		6.5	160.0	5.0	5	11.8	326.0		
HELLSTROM		3.0	63.0	2.0	2	9.0	200.0		
HOLLIS		6.0	101.0	0.0	0	13.0	368.0		
KROTHAPALLI		3.0	14.0	12.0	12	14.0	90.0		
LARSON		1.0	57.0	0.0	0	4.0	228.0		
LOURENCO		2.0	10.0	0.0	0	6.0	30.0		
OATES		3.0	35.0	10.0	10	11.0	155.0		
ORDONEZ		3.0	118.0	15.0	15	20.5	568.0		
SHIH		5.0	60.0	3.0	3	16.0	201.0		
VAN DOMMELEN		5.0	124.0	2.0	2	13.0	361.0		
VAN SCIVER		2.0	25.0	4.0	4	6.0	100.0		
KAMETANI		2.0	16.0	0.0	0	3.0	48.0		
WARYOBA		6.0	204.0	0.0	0	15.0	612.0		
KRUDA		12.0	228.0	0.0	0	15.6	721.0		
KALU		0.0	0.0	4.0	4	3.0	27.0		
MOORE		6.0	135.0	1.0	1	11.5	536.0		
<b>SUM</b>		89.0	1,648	99.0	99	234.2	5,544.0		
<b>MEAN</b>		4	82	5	5	12	277.2		
<b>MEDIAN</b>		4.5	66	3.5	4	12.4	214.5		